

Natural Areas and Parks

Department Head: Jerry Davis, Parks Director

Location: Avery Complex
360 SW Avery Avenue
Corvallis

Telephone: (541) 766-6871

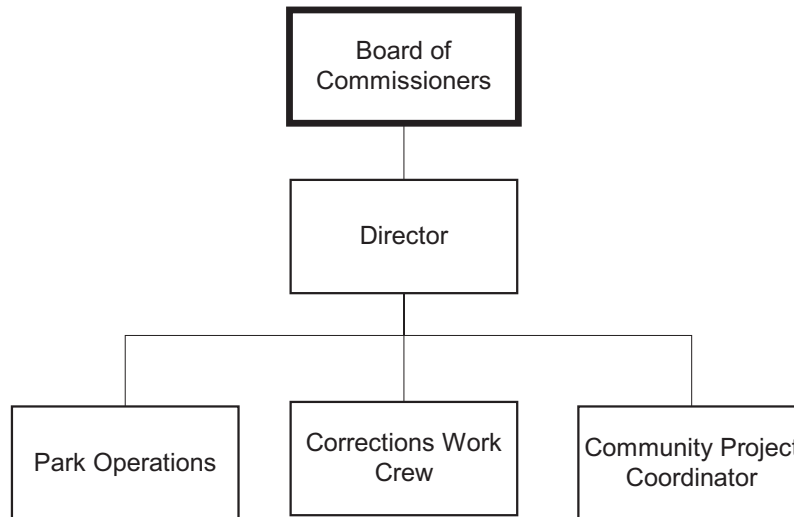
FAX: (541) 766-6891

Organization: The department director is appointed and serves at the pleasure of the Board of Commissioners.

Major functions include natural areas, parks, adult corrections work crew, campground, and trails management and operation (over 1,400 acres of parkland), county building grounds maintenance, Crystal Lake Cemetery operations and maintenance, and community project management associated with grants, economic development and other resources.

A Parks Advisory Board is appointed by the Board of Commissioners (BOC) to advise department and BOC on resource management and development issues. There are also special technical advisory groups for development and management of the Jackson-Frazier Wetland and Fort Hoskins Historic Park.

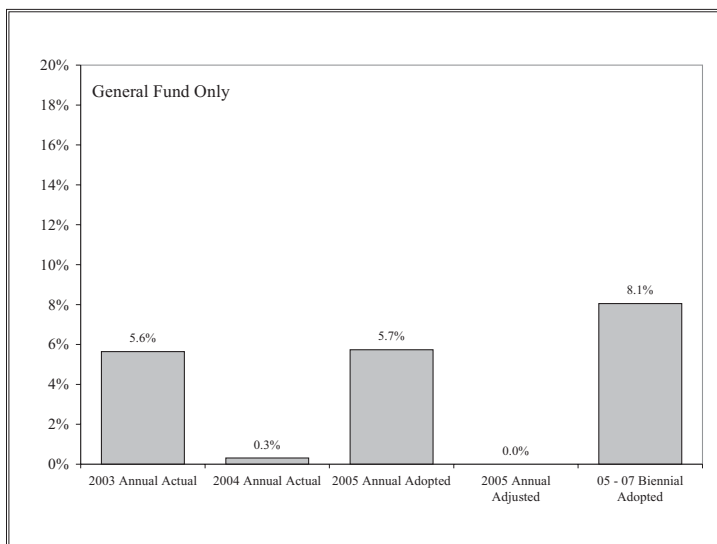
Parks Department



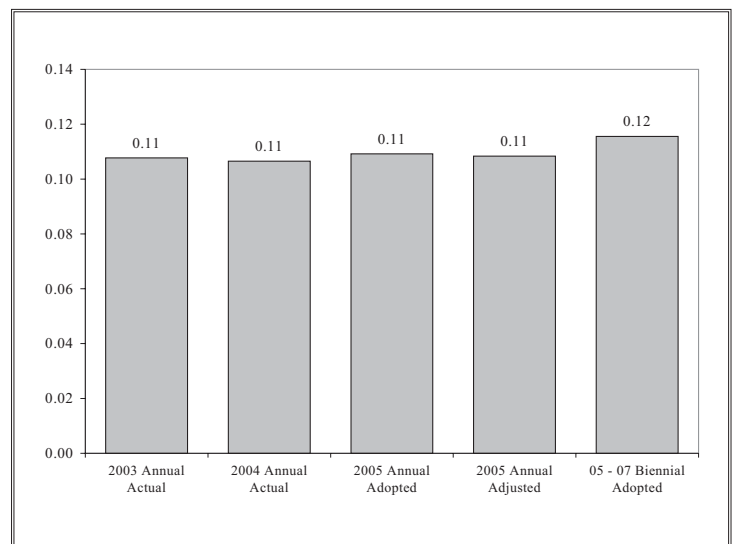
Budget Summary

	2003 Annual Actual	2004 Annual Actual	2005 Annual Adopted	2005 Annual Adjusted	05 - 07 Biennial Adopted
General Revenues	2,091	0	0	0	0
Charges for Service	88,888	85,275	80,820	80,820	170,153
Operating Grants	198,283	194,508	286,100	286,100	524,315
Capital Grants	2,500	117,101	236,954	236,954	830,000
Loans & Transfer/Revenues	101,355	65,974	46,967	46,967	110,115
Dedicated Beginning Balance	169,489	155,265	344,000	344,000	322,051
Total Resources	562,606	618,123	994,841	994,841	1,956,634
Personal Services	493,273	483,283	510,867	510,867	1,117,856
Materials & Services	261,683	236,604	282,398	282,398	588,462
Capital Outlay	104,732	62,042	399,950	399,950	1,006,760
Other	61,953	97,480	357,138	357,138	434,956
Total Expenditures	921,641	879,408	1,550,353	1,550,353	3,148,034
Surplus / (Deficit)	-359,035	-261,285	-555,512	-555,512	-1,191,400
Fund Summary					
General Fund	644,352	646,349	683,429	683,429	1,476,905
Capital Improvement Fund	3,983	25,592	128,500	128,500	0
Enterprise Operations	53,383	41,892	57,220	57,220	117,836
Trust Fund	203,269	138,788	533,504	533,504	1,305,125
Cemetery Operations	16,654	26,787	147,700	147,700	248,168
Total Budget by Fund	921,641	879,408	1,550,353	1,550,353	3,148,034
Full Time Equivalent (FTE)	8.51	8.51	7.94	7.94	7.95
Temporary Hire Equivalent (FTE)	NA	NA	0.85	0.85	1.49

Annual Change in Budget (Biennial value based on average annual value)



Employees per 1,000 population



Overview

Department Head Message

In April 2003, the Board of Commissioners renamed the Parks Department to Natural Areas and Parks Department to better reflect the inclusion of activities such as passive recreation, environmental education and restoration. Staff in the department pride themselves in working with the advisory committees, other members of the public, partnering public agencies and non-profits, private landowners, and businesses to provide outstanding services while continually facing financial constraints.

The department presently manages over 1400 acres, with most of the acreage in natural areas. The parks system enjoys a broad range of resources for people of all ages. For example: Jackson-Frazier Wetland has a barrier free boardwalk, allowing folks in wheelchairs easy access to this beautiful resource; Fort Hoskins Historic Park is on the National Historic Register and is developed to interpret our rich history; Adair Park is developed to provide large group picnics, and includes a newly constructed children's play area and an 18-hole Disc Golf Course; Salmonberry Campground is located on the Alsea River and provides a camping experience in a stunningly beautiful valley; recently acquired Crystal Lake Cemetery is also on the National Historic Register and is supported by a 'friends group' that is helping this resource be a great educational resource; Beazell Memorial Forest is our largest resource at 586 acres. This site is still being developed for passive recreation and for forest education purposes. These sites mentioned are an example of the incredible diversity in our parks system.

Corrections Work Crew

	2003 Annual Actual	2004 Annual Actual	2005 Annual Adopted	2005 Annual Adjusted	05 - 07 Biennial Adopted
General Revenues	-	-	-	-	-
Charges for Service	-	-	1,500	1,500	500
Operating Grants	-	-	-	-	-
Capital Grants	-	-	-	-	-
Loans & Transfer/Revenues	-	-	-	-	-
Dedicated Beginning Balance	-	-	-	-	-
Total Resources	-	-	1,500	1,500	500
Personal Services	25,741	28,271	29,715	29,715	70,001
Materials & Services	8,998	6,320	7,077	7,077	15,695
Capital Outlay	637	1,099	900	900	4,600
Other	-	-	-	-	-
Total Expenditures	35,376	35,691	37,692	37,692	90,296
Surplus / (Deficit)	(35,376)	(35,691)	(36,192)	(36,192)	(89,796)
Full Time Equivalent (FTE)	0.50	0.50	0.50	0.50	0.50
Temporary Hire Equivalent (FTE)	NA	NA	0.00	0.00	0.00

Purpose: Provide a sentencing alternative for nonviolent offenders performing maintenance activities and services for county and other local governments. The work crew is a public safety program managed within the Parks Department.

Budget Note: Half of the Work Crew budget is in Parks and half of the budget is in the Public Works Department Road Fund.

Accomplishments

- Using minimum wage rates, performed \$62,830 worth of labor for community service support.
- Provided a productive alternative to incarceration and saved Benton County \$133,680 of incarceration costs (time not spent in jail).
- Supplemented Parks Maintenance staff in completing various operational tasks.
- Partnered with Corvallis Parks and Recreation to maintain trail connections in Bald Hill City Park and on other area trails
- Assisted setup and takedown for da Vinci Days community event
- Assisted with Crystal Lake Cemetery maintenance and cleanup projects
- Assisted with site preparation for Adair Park Playground replacement
- Assisted with numerous landscape maintenance, site preparation and construction projects.

Performance Measures:

- Labor performed for community service support: \$ 62,830
- Incarceration costs saved (time not spent in jail): \$133,680
- Hours of labor performed for community projects: 8,912

Objectives:

- Assist various public agencies and communities with public service projects
- Assist department with landscape maintenance and construction projects
- Assist department in construction and maintenance of trails
- Assist Fairgrounds with maintenance and construction projects
- Provide a productive alternative to incarceration

Parks Operations

	2003 Annual Actual	2004 Annual Actual	2005 Annual Adopted	2005 Annual Adjusted	05 - 07 Biennial Adopted
General Revenues	2,091	-	-	-	-
Charges for Service	44,062	38,718	25,200	25,200	56,800
Operating Grants	67,987	73,122	73,700	73,700	138,600
Capital Grants	-	-	-	-	-
Loans & Transfer/Revenues	13,912	21,724	27,517	27,517	89,605
Dedicated Beginning Balance	2,000	-	-	-	-
Total Resources	130,052	133,565	126,417	126,417	285,005
Personal Services	451,959	453,929	481,152	481,152	1,047,066
Materials & Services	138,362	146,666	161,985	161,985	327,383
Capital Outlay	8,057	10,063	2,600	2,600	12,160
Other	10,598	-	-	-	-
Total Expenditures	608,975	610,659	645,737	645,737	1,386,609
Surplus / (Deficit)	(478,924)	(477,094)	(519,320)	(519,320)	(1,101,604)
Full Time Equivalent (FTE)	7.44	7.44	7.44	7.44	7.45
Temporary Hire Equivalent (FTE)	NA	NA	0.85	0.85	1.49

Purpose: To provide accessible, quality facilities and services that meet the needs of county residents and guests.

Accomplishments

- 600 hours of Volunteer services for Citizen Advisory Committees (Parks Advisory Board, Jackson-Frazier Wetland Technical Advisory Committee, Fort Hoskins Citizens Advisory committee)
- 3000 Hours of Park Volunteers for projects at the following sites: Fort Hoskins Historic Park; Jackson-Frazier Wetland; Trails Programs (site preparation, maintenance, clearing, upkeep); Salmonberry Campground; Beazell Memorial Forest; Fitton Green Open Space Resource.
- Coordinated several Eagle Scout and Boy Scout Community Service Projects:
- Fitton Green Trail Improvements
- *Educational Outreach: Provided opportunities for outdoor classroom projects and research, and received valuable products for park operations. Coordinated volunteer outreach programs at middle and elementary schools, LBCC & OSU. Co-sponsored, with Corvallis Parks and Recreation, Heart of the Valley Astronomers club and associated community events. Sponsored volunteer service for 4-H Wildlife Stewards program with OSU Extension Service; Salmon Watch Field Trips by Oregon Trout at Clemens Park
- Partnered Research Projects (with OSU, USDA Forest Service, Fish & Wildlife, College, High School and Middle School Students) at Beazell Memorial Forest, Fort Hoskins Historic Park, Fitton Green Natural Area, and Jackson-Frazier Wetland
- Jerry Davis and Department received 2004 Trail Advocate Award from American Trails Board
- Allan Kitzman and Department received 2004 Benton Soil & Water Conservation District Cooperator of the Year Award
- Received Extension through 2007 for Fort Hoskins Historic Park Wildlife Habitat Improvement Program (WHIP) funds of Oak Savannah Restoration work; partners - Benton Soil & Water District and USDA
- Partnered with Avery House Nature Center/Corvallis Environmental Center for ongoing educational programs at Clemens Park, Beazell Memorial Forest and Fort Hoskins Historic Park
- Partnerships with State Operated Community Program (SOCP) Group Homes for Job Training opportunities for weekend Parks Maintenance duties; Partnership with Work Unlimited Vocational Rehabilitation for assistance with Crystal Lake Cemetery inventory and database; Partnership with Albertina Kerr Youth Crew - landscape projects with Parks' Landscape Gardener
- Complete Revision/Update of Jackson-Frazier Wetland Management Plan; ready for Planning Commission review and BOC adoption
- Completed Adair Park Playground Rehabilitation, with Local Government Grant Program assistance
- Partnered with Public Works to construct Salmonberry Campground Showers Addition, with County Opportunity Grant Fund Assistance
- Partnered with Benton County Public Works to complete major infrastructure improvements (access, parking, trails and connections) at Fitton Green Natural Area

- Continued Cooperative & Partnership Agreements with US Fish & Wildlife for Restoration Activities at Jackson-Frazier Wetland, Bezell Memorial Forest and Fitton Green Natural Area
- Managed construction of Alsea Community Center Library as part of coordination of Block Grant program for BOC
- Completed 2004 Need and Issues Inventory Annual Update and working with agencies to develop funding packages for projects
- Continued Updating of County Parks Website; Update, Printing & Distribution of "Parks of Benton County" brochure
- Partnered with Council of Governments to secure Benton County project funding through Regional Investment Fund Program
- Continued partnership with Community Services Consortium to provide housing rehabilitation assistance to Benton County residents, and will apply for new grant funds
- Partnered with Community Development Dept. on grants for unincorporated area planning efforts and update of B.C. Comprehensive Plan
- Continued implementation of Fitton Green Stewardship Plan - restoring native upland meadow and Oregon White Oak habitat
- Completed 3rd Social Gathering event (BCC Chapter 13) - Shrewsbury Renaissance Faire, Sept. 2004
- Disc Golf Course Expansion & Improvements at Adair Park; Donations (with Clubhouse Enterprise) funded; Volunteers designed & constructed course & site improvements
- Continued Investigation of Opportunities with State Parks and south County neighbors for Willamette River restoration sites, including Norwood Island and Anderson Park; Norwood Island Conservation Easement secured
- Supported daVinci Community and Design Committee
- Parks and Public Works staff worked to create float for 20th annual Community Parade Nov. 2004

Performance Measures:

- Parks Department goal is a 50% return of park user (reservations) survey forms, which would give the department approximately 52 annual surveys to provide feedback on operations.
- 2004 season = 83% return of survey forms [87 surveys returned out of 105 sent]
- Of the respondent park user surveys, the Parks Department will strive for 90% or better number of responses in the "excellent" and "good" categories (choices are poor, satisfactory, good and excellent) for the following services [2003 calendar year reservation season]:
- Reservation process/contact with Parks staff 98%
- Condition of group picnic area 94%
- Condition of restrooms 96%
- Kitchen shelter/food preparation area 95%
- Sports fields/play areas 95%
- Roadways/pathways/parking 94%
- Park appearance and maintenance 97%
- One hundred percent of Parks Maintenance Staff will maintain current Public Pesticide Applicator license. 100%

Objectives

- Partner with Girl Scouts of Santiam Council for Adair Park International Camporee July 2005
- Continue partnership with Adair Disc Golf Course volunteers: design & construct additional course & site improvements; funded through donations (and Clubhouse Enterprise funds)
- Continue partnership with Radio Control Club volunteers: Adair Aerodrome site maintenance, upkeep
- Assist compatibility of use for Adair Disc Golf Course and Adair Aerodrome
- Continue to Partner with City of Corvallis in reviewing costs/benefits of developing long term Agreement with accompanying Master Plan for Benton County Parks to operate Willamette Park Campground.
- Avery departments - Natural Areas & Parks, Community Development, Public Works - Continue Strategies for Sustainable Operations
- Continue Partnerships with State Operated Community Program (SOCP) Group Homes for Job Training opportunities for weekend Parks Maintenance duties
- Assist volunteers with trail maintenance, stream enhancement and bank stabilization; rock hauler to be available to volunteers for trail construction and maintenance
- Assist Community and Design Committee to produce 'sustainable theme' speakers' series Continue partnership opportunities with State Parks and south County neighbors for Willamette River restoration sites, including Norwood Island and Anderson Park
- See Trust Funds for Fort Hoskins Historic Park, Bezell Memorial Forest & Jackson-Frazier Wetland site and project details, including the following:
- Continue oak savanna restoration at Fort Hoskins, including working with Benton Soil & Water District/Wildlife Habitat Improvement Program (WHIP) funding
- Continue Bezell Memorial Forest Stewardship Management Plan implementation and site development

Cemetery Operations

	2003 Annual Actual	2004 Annual Actual	2005 Annual Adopted	2005 Annual Adjusted	05 - 07 Biennial Adopted
General Revenues	-	-	-		-
Charges for Service	3,200	7,759	10,100	10,100	20,525
Operating Grants	2,512	2,681	2,600	2,600	121,500
Capital Grants					
Loans & Transfer/Revenues	-	-	-		-
Dedicated Beginning Balance	146,129	135,187	135,000	135,000	106,143
Total Resources	151,841	145,627	147,700	147,700	248,168
Personal Services	-	1,083	-	-	789
Materials & Services	16,654	13,703	7,481	7,481	47,116
Capital Outlay	-	4,139	10,450	10,450	-
Other	-	7,862	129,769	129,769	200,263
Total Expenditures	16,654	26,787	147,700	147,700	248,168
Surplus / (Deficit)	135,187	118,840	0	0	0
Full Time Equivalent (FTE)	NA	NA	0.00	0.00	0.00
Temporary Hire Equivalent (FTE)	NA	NA	0.00	0.00	0.00

Purpose: Responsible for management and operations/maintenance of Crystal Lake Cemetery. The Parks Department is continually reviewing the operational procedure in order to improve cost effectiveness.

Budget Note: Cemetery operations fund is charged for Parks Administration Cost/Overhead Recovery Budget Allocation. Maintenance costs have been lowered by using the Adult and Juvenile Work Crews. A Volunteer Program is currently being utilized. Southerly 4.15 acres has option agreement for purchase with proceeds assumed in fund revenues.

Accomplishments

- Continued implementation of Sustainable Business Plan for Crystal Lake Cemetery
- Maintained Contract with Cemetery Management Services, Inc. for daily business operations and sales
- Maintained Memorandum of Understanding with Benton County Juvenile Department for Crystal Lake Cemetery Maintenance Assistance by Juvenile Work Crew
- Continued utilization of Adult Corrections Work Crew for Crystal Lake Cemetery Maintenance Assistance
- Purchased shared mower for park operations (Clubhouse Enterprise Fund revenue) and Crystal Lake Cemetery
- Partnered with Corvallis Neighborhood Housing Services (CNHS) for successful annexation of Crystal Lake/CoHo housing project; CNHS exercising option agreement to purchase southerly 4.15-acre parcel
- Partnered with Community Development Department and Historic Resources Commission for work with "Friends of Crystal Lake Cemetery" citizen group; completed site inventory and initial database entries
- Continued Parks Administration Cost/Overhead Recovery Budget Allocation

Objectives

- Continue to utilize Juvenile and Adult Work Crew programs at Crystal Lake Cemetery
- Partner with Juvenile Department Work Crew Division to develop a flower garden for the purpose of site beautification and visitor use
- Research partnerships for developing vegetable garden site and possibly community garden
- Continue to utilize the Crystal Lake Cemetery Preservation Plan as a resource tool for managing and improving the Cemetery
- Continue Partnering with Community Development Department and Historic Resources Commission for work with "Friends of Crystal Lake Cemetery" citizen group to complete marker inventory and maintenance/repair plan
- Continue partnering with Corvallis Neighborhood Housing Services regarding purchase of the southerly 4.15 acres; proceeds to be added to the Cemetery Operations Account

Capital Improvement Program

	2003 Annual Actual	2004 Annual Actual	2005 Annual Adopted	2005 Annual Adjusted	05 - 07 Biennial Adopted
General Revenues	-		-		-
Charges for Service	-	-	-		-
Operating Grants	3,000	1,500	20,000	20,000	-
Capital Grants	2,500	17,101	64,250	64,250	-
Loans & Transfer/Revenues	7,049	44,250	19,250	19,250	-
Dedicated Beginning Balance	(11,729)	(3,162)	25,000	25,000	-
Total Resources	821	59,688	128,500	128,500	-
Personal Services	-	-	-		-
Materials & Services	1,557	2,179	-	-	-
Capital Outlay	2,425	23,412	128,500	128,500	-
Other	-	-	-		-
Total Expenditures	3,983	25,592	128,500	128,500	-
Surplus / (Deficit)	(3,162)	34,097	-	-	-
Full Time Equivalent (FTE)	NA	NA	0.00	0.00	0.00
Temporary Hire Equivalent (FTE)	NA	NA	0.00	0.00	0.00

Purpose: Account for grants, donations and transfers supporting major maintenance or capital improvements to the county parks system.

Accomplishments

NA

Performance Measures

NA

Objectives

NA

Enterprise Operations

	2003 Annual Actual	2004 Annual Actual	2005 Annual Adopted	2005 Annual Adjusted	05 - 07 Biennial Adopted
General Revenues	-	-	-	-	-
Charges for Service	38,496	34,898	39,220	39,220	80,928
Operating Grants	-	282	2,000	2,000	1,000
Capital Grants	-	-	-	-	-
Loans & Transfer/Revenues	-	-	-	-	-
Dedicated Beginning Balance	32,493	17,606	16,000	16,000	35,908
Total Resources	70,989	52,786	57,220	57,220	117,836
Personal Services	-	-	-	-	-
Materials & Services	2,028	3,030	8,226	8,226	49,687
Capital Outlay	-	-	7,500	7,500	-
Other	51,355	38,862	41,494	41,494	68,149
Total Expenditures	53,383	41,892	57,220	57,220	117,836
Surplus / (Deficit)	17,606	10,894	-	-	-
Full Time Equivalent (FTE)	NA	NA	0.00	0.00	0.00
Temporary Hire Equivalent (FTE)	NA	NA	0.00	0.00	0.00

Purpose: Account for concessionaire contract and building maintenance obligations of the Benton County Clubhouse at Adair.

Budget Note: Private concessionaire operates clubhouse and facilities under agreement signed in 1998. Income derived from the contract, in excess of contractual obligations for facility maintenance and overhead, will be used for parks capital improvements, and Parks Administration Cost/Overhead Recovery.

Accomplishments

- Completed hazard tree work at Clubhouse
- Reserve revenue available for parks capital projects, including Adair Park Playground Rehabilitation and purchase of shared mower (Park Operations and Crystal Lake Cemetery)
- Reserve revenue available for Parks Administration Cost Recovery Budget Allocation
- Assisted funding of Adair Park Disc Golf Course/Improvements (volunteer donations, design & construction)

Performance Measures

Measure	99-00	00-01	01-02	02-03	03-04	04-05
Revenue generated annually for Clubhouse capital improvements, Adair Park capital projects, general park purposes and administrative cost recovery	\$26,925	\$32,700	\$36,960	\$37,770	\$38,451	\$39,220

Objectives

- Continue to monitor concessionaire agreement and status report
- Negotiate concessionaire agreement renewal (12/31/05)/5-year extension option
- Continue reserve revenue assistance with capital projects, as required
- Partner with City of Adair for Park/Village Easement Trail
- Continue funding assistance of Adair Park Disc Golf Course/Improvements (Volunteer donations, design & construction)
- Continue Parks Administration Cost/Overhead Recovery Budget Allocation
- Develop and Implement Pavement Maintenance Program (also CIP)

Trust Programs

	2003 Annual Actual	2004 Annual Actual	2005 Annual Adopted	2005 Annual Adjusted	05 - 07 Biennial Adopted
General Revenues					
Charges for Service	3,130	3,900	4,800	4,800	11,400
Operating Grants	124,784	116,923	187,800	187,800	263,215
Capital Grants	-	100,000	172,704	172,704	830,000
Loans & Transfer/Revenues	80,393	-	200	200	20,510
Dedicated Beginning Balance	597	5,635	168,000	168,000	180,000
Total Resources	208,904	226,457	533,504	533,504	1,305,125
Personal Services	15,573	-	-	-	-
Materials & Services	94,083	64,705	97,629	97,629	148,581
Capital Outlay	93,613	23,327	250,000	250,000	990,000
Other	-	50,756	185,875	185,875	166,544
Total Expenditures	203,269	138,788	533,504	533,504	1,305,125
Surplus / (Deficit)	5,635	87,669	-	-	-
Full Time Equivalent (FTE)	NA	NA	0.00	0.00	0.00
Temporary Hire Equivalent (FTE)	NA	NA	0.00	0.00	0.00

Purpose: Account for moneys donated or granted by public and private sources for specific or general purposes.

Accomplishments

- Continued Implementation Beazell Memorial Forest Stewardship Management Plan
- Harvested trees enter the 'green certified' market acknowledging sustainable stewardship practices
- Beazell Memorial Forest Education Facility - architectural services secured for development
- Secured Recreational Trails Program (RTP) grant assistance; completed Fitton Green Natural Area Access and Trail Improvements; youth crews employed for 3 weeks of trail construction
- Partnered Research Projects at Beazell Memorial Forest, Fort Hoskins Historic Park, Fitton Green Open Space, and Jackson-Frazier Wetland with O.S.U., USDA Forest Service, Fish & Wildlife, High School and College students
- Accomplished review and update of Jackson-Frazier Wetland Management Plan

Performance Measures:

- Manage a sustainable natural resource system that meets the performance measures of nationally recognized 'Smartwood Program' in order to manage a biologically diverse, healthy and sustainable ecosystem that will support the educational and recreational activities of the sites.
- Manage the Beazell Memorial Forest in keeping with Fred Beazell's vision.

Objectives

- Partner with Corvallis Environmental Center Avery House Nature Center (and Chintimini Wildlife Rehabilitation Center) to implement proposed After-School Forest Education Programs at Beazell Memorial Forest
- Continue Contract with Fort Hoskins Caretaker for Beazell Memorial Forest maintenance duties
- Continue review and update of Jackson-Frazier Wetland Management Plan
- Work with professional architectural services for the renovation of the Beazell Barn: site evaluation, cost estimates, preliminary design drawings, final plans and specifications
- Continue preparations for construction/renovation of Beazell Memorial Forest Education Facility/Barn Renovation
- Implement revised Jackson-Frazier Wetland Management Plan
- Continue partnering research and educational projects at Beazell Memorial Forest, Fort Hoskins Historic Park, Fitton Green Open Space Natural Area, and Jackson-Frazier Wetland with OSU, USDA/Forest Service, Fish & Wildlife, etc.
- Coordinated with Corvallis Outdoor School Program to provide educational opportunities at Beazell Memorial Forest and Fort Hoskins Historic Park