

# Juvenile

## Function & Organization:

The department director is appointed by the Board of Commissioners. The Juvenile Department is organized into four programs.

County unrestricted funds support the Youth Offender Program, which consists of six Juvenile Counselors. Counselors provide a continuum of services to a general caseload with the goal of community protection and practical rehabilitation.

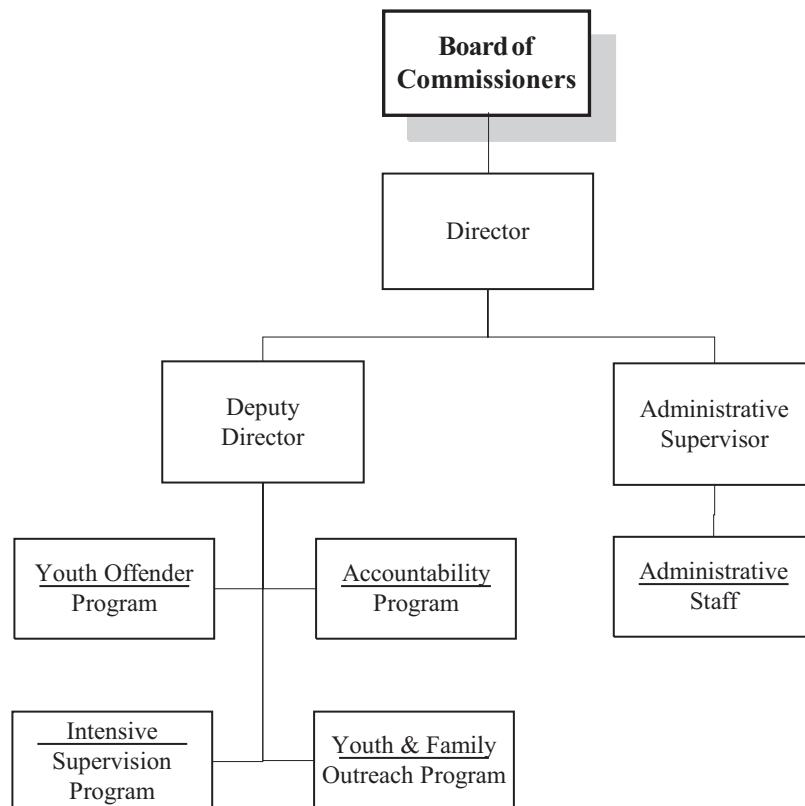
The Intensive Supervision Program is funded by the Oregon Youth Authority. One Juvenile Counselor provides a high level of service and supervision to serious and chronic youth offenders who are at risk of commitment to a youth correctional facility.

The Juvenile Accountability Program is funded by a combination of state, federal, and county funds. Two staff members supervise the Community Service/Work Crew program. Through community service and work crew activities, juvenile offenders pay back the community while learning skills and taking responsibility for their actions.

The Youth and Family Outreach Program is funded by the Commission on Children and Families. The program, operated by one Juvenile Counselor, provides services to at-risk youths and their families to prevent juvenile crime, school dropouts, and substance abuse.

## Organization Chart:

# Juvenile Department



# Budget Summary

Juvenile - All Funds

<b>Resource / Expense Category</b>	<b>2003-04 Annual Actual</b>	<b>2004-05 Annual Actual</b>	<b>2005-07 Biennium Adopted</b>	<b>2005-07 Biennium Adjusted</b>	<b>2007-09 Biennium Adopted</b>	<b>% Change Over Adjusted</b>
General Revenues	1,384,796	1,409,588	3,141,397	3,105,982	2,903,300	-6.5%
Charges for Service	86,291	109,917	180,488	180,488	192,812	6.8%
Operating Grants/Contributions	158,182	177,137	345,090	345,090	351,422	1.8%
Capital Grants/Contributions	-	-	-	-	-	--
Internal Fund Transfers	-	-	-	-	-	--
Loans	-	-	-	-	-	--
Current Revenues Total	1,629,269	1,696,642	3,666,975	3,631,560	3,447,534	-5.1%
Unrestricted Beginning Balance	-	-	-	-	-	--
Dedicated Beginning Balance	40,909	2,438	849	849	1,500	76.7%
Capital Beginning Balance	-	-	-	-	-	--
Beginning Balance Total	40,909	2,438	849	849	1,500	76.7%
Total Resources	1,670,178	1,699,080	3,667,824	3,632,409	3,449,034	-5.0%
Personnel Services	1,074,185	1,087,694	2,352,294	2,352,294	2,311,308	-1.7%
Materials & Services	593,556	611,386	1,315,530	1,280,115	1,120,330	-12.5%
Capital Outlay	-	-	-	-	-	--
Other: Internal Fund Transfers	-	-	-	-	-	--
Other: Loans	-	-	-	-	-	--
Other: Debt Principle	-	-	-	-	-	--
Other: Debt Interest	-	-	-	-	-	--
Expenditures Total	1,667,741	1,699,080	3,667,824	3,632,409	3,431,638	-5.5%
Other: Contingency	-	-	-	-	-	--
Other: Reserve for Future Years	-	-	-	-	17,396	--
Other: Unappropriated Balance	-	-	-	-	-	--
Other Total	-	-	-	-	17,396	--
Dedicated Rev. Surplus/(Deficit)	2,437	-	-	-	-	
<b>Full-Time-Equivalent (FTE) by Type</b>						
Regular (Greater than .50 FTE)	18.00	17.30	15.50	14.50	14.50	0.0%
Temporary Hire	-	1.00	1.30	1.30	2.30	76.9%
<b>Personnel Distribution by Fund</b>						
General	14.00	18.30	16.80	15.80	16.80	6.3%
Health & Safety Levy	4.00	-	-	-	-	--
Total Personnel (FTE)	18.00	18.30	16.80	15.80	16.80	6.3%
<b>Expenditures by Fund</b>						
General	1,448,284	1,699,080	3,667,824	3,632,409	3,431,638	-5.5%
Health & Safety Levy	219,457	-	-	-	-	--
Total Expenditures	1,667,741	1,699,080	3,667,824	3,632,409	3,431,638	-5.5%
<b>Reserve Distribution by Fund</b>						
General	-	-	-	-	17,396	--
Other (Reserve) Total	-	-	-	-	17,396	--

## Budget Note:

The reserve in the general fund is in the Youth Outreach program and represents the maximum possible funding from state and federal sources. Since the amount is still uncertain the department chose to allocate a portion to reserve. When the biennium amount is determined the reserve will be reduced and/or distributed as appropriate.

# Department Head Message

## Juvenile Department

The role of the Juvenile Department is that of a catalyst for developing safe communities and healthy youth and families. We accomplish this by holding offenders accountable, building and maintaining community-based partnerships, implementing results-based and outcome-driven services and practices, advocating for and addressing the needs of victims, offenders, families and communities, and obtaining and sustaining sufficient resources.

Budget reductions during the 2005-07 biennium forced the elimination of three positions in the Juvenile Department. Two Juvenile Outreach Specialist positions were cut and the Victim Offender Mediation Program was eliminated due to the loss of funding for the Restitution-Mediation Coordinator. Despite these reductions, the department continued to provide positive youth development programs above and beyond basic supervision and support.

In cooperation with Benton County Mental Health and the Jackson Street Youth Shelter, the Juvenile Department co-sponsored six incentive activities serving seventy-two youths in 2006. Activities included a photography project led by the Corvallis Arts Center, visits to Oregon State University and Linn Benton Community College, a day at the Benton County Fair, and a geocaching expedition with Search & Rescue volunteers.

Benton County's Juvenile Drug Treatment Court became operational in March of 2005. In December 2006, the first three youths graduated from the program. Drug Court participants check in with the court weekly, receive random drug tests, and participate in drug & alcohol counseling through Benton County Mental Health.

The department offers a Job Skills Group that teaches job search skills, filling out applications, resume-writing, interviewing, and appropriate work attire and behavior. Students who successfully complete the course are eligible to apply for paid positions with the ODOT Litter Patrol. The Juvenile Department contracts with the Oregon Department of Transportation to provide roadside litter patrol services in Linn and Benton Counties. Twenty-one youths participated on litter patrol crews during the past year after completing the Job Skills Group.

Challenges for the 2007-09 biennium include re-instituting the Teen Court Program and maintaining the Juvenile Drug Treatment Court. Teen Court was discontinued by the Benton County Sheriff's Office in November 2006. Plans include expanding the eligibility requirements and providing more services and supervision to Teen Court clients. The department will also be exploring the possibility of using student interns to help run the program.

The Juvenile Drug Treatment Court has survived thus far primarily due to in-kind contributions from the Juvenile Department and Benton County Mental Health along with a small amount of funding from the state. The department in conjunction with its court partners will continue to seek funding to maintain court services.

**Juvenile Director:**

Al Krug

**Office Location:**

4815 SW Research Way  
Suite 100  
Corvallis, OR 97333

**Telephone:**

(541) 766-6810

**FAX:**

(541) 766-6071

# Offender Services

Juvenile - General Fund

## Purpose:

Offender Services is the Juvenile Department's core program for youth referred for law-violating behavior. It provides all mandated services: intake screening, court investigations, development of dispositional recommendations, enforcement of court orders, referral to other agencies, probation and supervision, and assistance to the Juvenile Court. Offender Services primarily serves youth 12-17 years of age with the goal of community protection and practical rehabilitation.

Resource / Expense Category	2003-04	2004-05	2005-07	2005-07	2007-09	% Change
	Annual Actual	Annual Actual	Biennium Adopted	Biennium Adjusted	Biennium Adopted	Over Adjusted
General Revenues	4,470	6,794	3,099,981	3,062,409	2,903,300	-5.2%
Program Income	16,779	18,403	42,000	34,000	33,000	-2.9%
Beginning Balance	-	-	849	849	1,500	76.7%
Resources	21,249	25,197	3,142,830	3,097,258	2,937,800	-5.1%
Personnel Services	836,518	834,818	1,883,909	1,878,110	1,931,333	2.8%
Materials & Services	542,956	558,154	1,258,921	1,219,148	1,006,467	-17.4%
Capital Outlay	-	-	-	-	-	--
All Other	-	-	-	-	-	--
Budget Total	1,379,474	1,392,972	3,142,830	3,097,258	2,937,800	-5.1%
<b>Full-Time-Equivalent (FTE) by Type</b>						
Regular (Greater than .50 FTE)	n/a	13.37	12.65	11.65	12.25	5.2%
Temporary Hire	na/	-	-	-	1.00	--

## Accomplishments:

- Provided transportation, GED testing, emergency food and clothing for clients to assist them in satisfying probation requirements
- Provided pre-employment training and paid employment for 21 youths on the ODOT Litter Patrol
- Instituted a Juvenile Drug Treatment Court in Benton County
- Coordinated services with Benton County Mental Health and private treatment specialists to provide mental health assessments, counseling, substance abuse education, treatment, and aftercare for over 75 youths

## Objectives:

- Continue competency groups: Girls Group, MARS, Drug and Alcohol, and Job Skills
- Continue implementation of "best practices" to reduce juvenile recidivism, maintain current level of services to all youths, and meet performance measure goals
- Re-institute and expand the Teen Court Program
- Secure funding to maintain the Juvenile Drug Treatment Court
- Maintain interagency partnerships and continue development of wraparound services

## In 2006:

- 73% of youth successfully completed probation (Target 70%)
- 93% of youth successfully completed a Formal Accountability Agreement (Target 90%)
- 91% successfully completed community service obligations (Target 75%)
- 95% successfully completed restitution agreements (Target 75%)

# Intensive Supervision

Juvenile - General Fund

## Purpose:

The Juvenile Department's Intensive Supervision Program serves serious and chronic youth offenders specifically identified as being at risk of incarceration. These adolescents must have in person contacts with their juvenile counselor at least once a week and frequently more often. Each is required to work toward the goal of rehabilitation while complying with community service, educational programs, substance use laws, restitution obligations, counseling and/or various competency groups.

Resource / Expense Category	2003-04 Annual Actual	2004-05 Annual Actual	2005-07 Biennium Adopted	2005-07 Biennium Adjusted	2007-09 Biennium Adopted	% Change Over Adjusted
General Revenues	-	-	-	(4,791)	-	-100.0%
Program Income	50,536	67,384	134,766	134,766	152,144	12.9%
Beginning Balance	7,944	-	-	-	-	--
Resources	58,480	67,384	134,766	129,975	152,144	17.1%
Personnel Services	58,105	63,701	116,624	116,624	125,693	7.8%
Materials & Services	8,627	9,059	18,142	13,351	26,451	98.1%
Capital Outlay	-	-	-	-	-	--
All Other	-	-	-	-	-	--
Budget Total	66,732	72,760	134,766	129,975	152,144	17.1%
<b>Full-Time-Equivalent (FTE) by Type</b>						
Regular (Greater than .50 FTE)	n/a	0.93	0.75	0.75	0.75	0.0%
Temporary Hire	n/a	-	-	-	-	--

## Accomplishments:

- Implemented a new home detention system utilizing GPS tracking to hold offenders more accountable
- Maintained our rate of incarceration of youth offenders at or below the cap imposed by the state for Benton County
- Recruited several graduate level interns to provide free mental health counseling to Juvenile Department clients
- Assisted in the third annual "Lunch with Santa" program that provided holiday gifts and food to approximately 80 Benton County boys and girls

## Objectives:

- Continue to remain at or below Benton County's Youth Correctional Facility bed allotment
- Continue implementation of "best practices" to reduce recidivism, maintain current level of services to all youths, and meet Intensive Supervision performance measure goals
- Continue to represent department on various city and county teams responding to abuse of adolescents and some adults
- Continue to maintain positive relationships with employees of local schools and sister agencies by educating them regarding juvenile justice and collaborating on programs offered to rehabilitate and support youths on probation

In 2006:

- 100% Maintenance of Oregon Youth Authority (OYA) bed use (Target 100%)
- 83% of youth successfully completed probation (Target 60%)
- 67% of youth reduced alcohol & drug use (Target 75%)
- 100% of youth successfully completed skill group (Target 75%)
- 100% of youth improved academic performance (Target 75%)

# Juvenile Accountability

Juvenile - General Fund

## Purpose:

The Juvenile Accountability Program aims to reduce the amount and severity of juvenile crime by holding youth accountable for their actions through graduated sanctions such as community service and work crew. This restorative justice program serves the community at large, crime victims, and youth offenders and their families.

Resource / Expense Category	2003-04	2004-05	2005-07	2005-07	2007-09	% Change
	Annual Actual	Annual Actual	Biennium Adopted	Biennium Adjusted	Biennium Adopted	Over Adjusted
General Revenues	705	-	33,416	53,891	-	-100.0%
Program Income	123,314	147,423	249,124	249,124	259,278	4.1%
Beginning Balance	32,965	2,438	-	-	-	--
Resources	156,984	149,861	282,540	303,015	259,278	-14.4%
Personnel Services	121,506	132,358	258,423	264,222	196,162	-25.8%
Materials & Services	33,040	34,937	24,117	38,793	63,116	62.7%
Capital Outlay	-	-	-	-	-	--
All Other	-	100	-	-	-	--
Budget Total	154,546	167,395	282,540	303,015	259,278	-14.4%
<b>Full-Time-Equivalent (FTE) by Type</b>						
Regular (Greater than .50 FTE)	n/a	2.10	1.50	1.50	1.00	-33.3%
Temporary Hire	n/a	1.00	1.30	1.30	1.30	0.0%

## Accomplishments:

- Refurbished and gave away fifty bicycles at the third annual "Lunch with Santa"
- Continued agreements with Public Works and Natural Areas and Parks Departments to maintain Crystal Lake Cemetery and perform road maintenance in Benton County
- 97% of participating youth successfully completed the Community Service/Work Crew Program in 2006

In 2006:

- 97% of youth successfully completed community service or work crew (Target 75%)
- 98% of youth successfully completed restitution (Target 75%)

## Objectives:

- Increase the diversity of community service and work crew opportunities
- Incorporate more skills training into the Community Service/Work Crew program
- Continue work with the Public Works and Natural Areas and Parks Departments
- Improve work crew program by implementing a scoring system and reminder calls for participants

# Youth & Family Outreach

Juvenile - General Fund

## Purpose:

This program provides services and resources to non-delinquent, at-risk youths and their families. The program goal is to strengthen these youths and families through services that encourage pro-social behavior and healthy lifestyles and to prevent delinquency, school dropout, substance abuse, and teen pregnancy

Resource / Expense Category	2003-04 Annual Actual	2004-05 Annual Actual	2005-07 Biennium Adopted	2005-07 Biennium Adjusted	2007-09 Biennium Adopted	% Change Over Adjusted
General Revenues	-	-	-	(5,527)	-	-100.0%
Program Income	53,844	53,845	107,688	107,688	99,812	-7.3%
Beginning Balance	-	-	-	-	-	--
Resources	53,844	53,845	107,688	102,161	99,812	-2.3%
Personnel Services	58,056	56,816	93,338	93,338	58,120	-37.7%
Materials & Services	8,932	9,137	14,350	8,823	24,296	175.4%
Capital Outlay	-	-	-	-	-	--
All Other	-	-	-	-	17,396	--
Budget Total	66,988	65,953	107,688	102,161	99,812	-2.3%
<b>Full-Time-Equivalent (FTE) by Type</b>						
Regular (Greater than .50 FTE)	n/a	0.90	0.60	0.60	0.50	-16.7%
Temporary Hire	n/a	-	-	-	-	--

## Accomplishments:

- 85% of program participants fulfilled the requirements of their case plans
- 85% of program participants completed alcohol and drug counseling
- Participated in the Youth Incentive and Enrichment Project
- Successfully completed a 16-hour training in Spanish for Probation Officers
- Assisted in the third annual "Lunch with Santa" program that provided holiday gifts and food to approximately 80 Benton County boys and girls

## Objectives:

- Provide individualized case plans for 60 or more youth
- Provide referrals for drug and alcohol education, evaluation and/or treatment for 55 or more youth
- Provide referrals for community service or work crew for 55 or more youth
- Provide referrals for counseling or support groups for 15 or more youth
- Provide gender-specific and culturally-sensitive services
- Provide wrap-around services by working closely with schools, Educational Service District, Health Department, Department of Human Services, Boys & Girls Club, LBCC Family Resource and Education Department, Jackson Street Youth Shelter, and other social services agencies.

In 2006:

- 95% of youth did not advance to youth offender or intensive supervision caseload (Target 90%)
- 98% of youth in stable home or independent living situation (Target 90%)
- 98% of youth in school and/or working (Target 90%)

