

Board of Commissioners

Function & Organization:

To provide the legislative and executive functions to ensure the legal and efficient administration of county affairs including enactment of legal ordinances, orders, resolutions, and agreements; budgeting, and appointments to citizen boards and committees. To provide for the administration of the county organization, including policies, information distribution and cooperation with other public agencies and organizations.

Board of Commissioners

Jay Dixon - 2009 Chair
Annabelle Jaramillo
Linda Modrell

Vance Croney, County Counsel
Margaret Kotyo, Office Manager

Office Location:

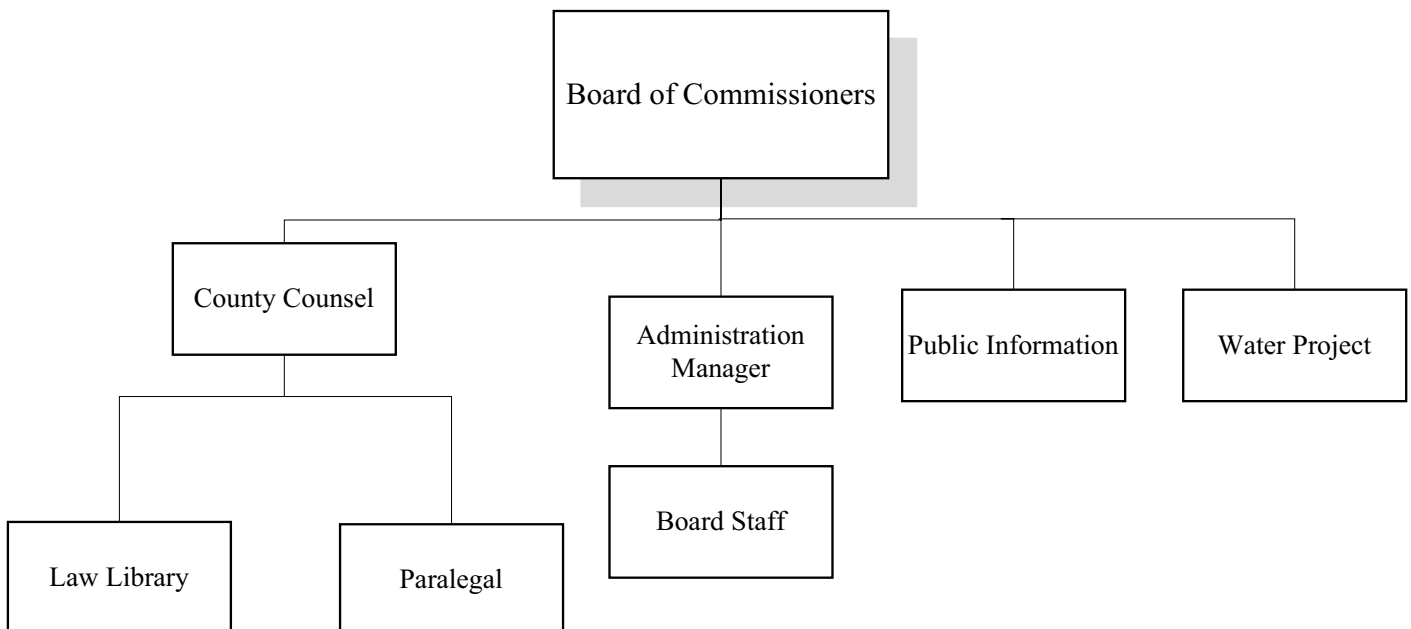
Benton Plaza
408 SW Monroe
Corvallis, OR 97333

Telephone:

(541) 766-6800

Organization Chart:

Board of Commissioners



Budget Summary

Board of Commissioners - All Funds

Resource / Expense Category	2004-05 Annual Actual	2005-07 Biennium Actual	2007-09 Biennium Adopted	2007-09 Biennium Adjusted	2009-11 Biennium Adopted	% Change Over Adjusted
General Revenues	-	-	1,860,082	1,910,082	2,094,311	9.6%
Charges for Service	51,241	507,811	527,000	527,000	506,209	-3.9%
Operating Grants/Contributions	325	2,424	-	40,000	39,877	-0.3%
Capital Grants/Contributions	-	-	-	-	-	--
Internal Fund Transfers	-	-	-	-	-	--
Loans	-	-	-	-	-	--
Current Revenues Total	51,566	510,235	2,387,082	2,477,082	2,640,397	6.6%
Unrestricted Beginning Balance	-	-	-	-	-	--
Dedicated Beginning Balance	-	3,201	6,408	6,408	-	-100.0%
Beginning Balance Total	-	3,201	6,408	6,408	-	-100.0%
Total Resources	51,566	513,436	2,393,490	2,483,490	2,640,397	6.3%
Personnel Services	641,969	1,485,644	1,633,642	1,633,642	1,832,293	12.2%
Materials & Services	249,611	715,409	759,003	849,003	808,104	-4.8%
Capital Outlay	-	-	-	-	-	--
Other: Internal Fund Transfers	-	-	-	-	-	--
Other: Loans	-	-	-	-	-	--
Other: Debt Principle	-	-	-	-	-	--
Other: Debt Interest	-	-	-	-	-	--
Expenditures Total	891,580	2,201,053	2,392,645	2,482,645	2,640,397	6.4%
Other: Contingency	-	-	845	845	-	-100.0%
Other: Debt Reserve	-	-	-	-	-	--
Other: Unappropriated Balance	-	-	-	-	-	--
Other Total	-	-	845	845	-	-100.0%
Budget Surplus/(Deficit)	(840,014)	(1,687,617)	-	-	-	
Full-Time-Equivalent (FTE) by Type						
Regular (Greater than .50 FTE)	9.60	9.10	9.10	10.10	9.50	-5.9%
Temporary Hire	0.30	0.30	0.30	0.30	0.30	0.0%
Personnel Distribution by Fund						
General	9.90	9.40	9.40	10.80	9.80	-9.3%
Expenditures by Fund						
General	891,580	2,201,053	2,392,645	2,482,645	2,640,397	6.4%
Total Expenditures	891,580	2,201,053	2,392,645	2,482,645	2,640,397	6.4%
Reserve Distribution by Fund						
General	-	-	845	845	-	-100.0%
Other (Reserve) Total	-	-	845	845	-	-100.0%

Budget Note:

The Water Policy Project position (1 FTE) is scheduled to end by June 30, 2010. Under county budget reporting rules the FTE is not counted above because it is not intended to be an active position at the end of the biennium.

Board of Commissioners

Board of Commissioners - General Fund

Purpose:

Three elected commissioners serve as the governing body and chief executive officer of the County. As the governing body, they enact ordinances, orders, resolutions, and agreements; set policy for the County's operations and direction; and act as a quasi-judicial body to rule upon land use and other decisions. As the chief executive officer, they appoint and oversee non-elected department heads, and set budget, human resources and financial policies of appointed and elected officials. They establish strategic plans and goals, promulgate information to the public, and work cooperatively with other public agencies and organizations.

Resource / Expense Category	2004-05 Annual Actual	2005-07 Biennium Actual	2007-09 Biennium Adopted	2007-09 Biennium Adjusted	2009-11 Biennium Adopted	% Change Over Adjusted
General Revenues	-	-	1,868,976	1,868,976	2,009,040	7.5%
Program Income	-	1,680	-	-	-	--
Beginning Balance	-	-	-	-	-	--
Resources	-	1,680	1,868,976	1,868,976	2,009,040	7.5%
Personnel Services	455,130	1,069,742	1,244,887	1,244,887	1,355,401	8.9%
Materials & Services	182,596	594,513	624,089	624,089	653,639	4.7%
Capital Outlay	-	-	-	-	-	--
All Other	-	-	-	-	-	--
Budget Total	637,726	1,664,255	1,868,976	1,868,976	2,009,040	7.5%
Full-Time-Equivalent (FTE) by Type						
Regular (Greater than .50 FTE)	7.60	7.10	7.60	7.60	8.00	5.3%
Temporary Hire	-	-	-	-	-	--

Accomplishments:

- The Board scheduled and held public hearings for approximately 31 Measure 37 claims, resulting in at least that many actions for findings of facts or continuations.
- After learning that one in four Benton County residents were unable to name one service offered by county government, the Board of Commissioners and county department heads held twelve community meetings throughout the county to meet informally with residents.
- Funding through Title III (Secure Rural Schools and Community Development, federal forest county payments) was allotted to the Community Wildfire Protection Plan (CWPP) initiative to educate rural residents on best practices to protect their property from wildfires. The CWPP also brings Benton County into compliance with U.S. Forest Service regulations.
- Driven by a citizen initiative, Benton County voters approved a five-year local option levy, allowing the county to maintain basic services. As promised, when the federal forest dollars were restored for four years, the county reduced levied property tax.
- Benton County expanded its Community Health Centers when the data showed a significant proportion of patients were from Linn County. A new center in Lebanon to serve East Linn residents was funded by a federal grant.
- Benton County commissioners participated in regional planning to address the issue of homelessness in Benton County. A plan is being completed for adoption.
- The Board partnered with the City of Corvallis to establish an Enterprise Zone to encourage the expansion and start-up of local businesses and industries.
- Began work on Oregon's first County Habitat Conservation Plan to conserve and protect prairie habitat species such as Fender's blue butterfly that are listed as Endangered Species.
- Launched first edition of a quarterly Benton County newsletter to keep residents informed on county services and initiatives.
- Completed Water Analysis and Demand Forecast for Benton County.
- Filled Department Director positions for Natural Areas and Parks, Community Development, and the Health Department.

Budget Note:

FTE count includes 3 commissioners who are required to serve full-time by the County Charter.

County Counsel

Board of Commissioners - General Fund

Purpose:

Counsel provides legal advice to the Board of Commissioners and county officials on civil matters and represents the county in all civil administrative and enforcement proceedings. Counsel drafts ordinances, reviews contracts and other agreements.

Resource / Expense Category	2004-05 Annual Actual	2005-07 Biennium Actual	2007-09 Biennium Adopted	2007-09 Biennium Adjusted	2009-11 Biennium Adopted	% Change Over Adjusted
General Revenues	-	-	(8,894)	(8,894)	36,750	-513.2%
Program Income	325	405,025	426,000	426,000	402,363	-5.5%
Beginning Balance	-	-	-	-	-	--
Resources	325	405,025	417,106	417,106	439,113	5.3%
Personnel Services	177,791	396,931	367,842	367,842	377,924	2.7%
Materials & Services	28,023	46,069	49,264	49,264	61,189	24.2%
Capital Outlay	-	-	-	-	-	--
All Other	-	-	-	-	-	--
Budget Total	205,814	443,000	417,106	417,106	439,113	5.3%
Full-Time-Equivalent (FTE) by Type						
Regular (Greater than .50 FTE)	2.00	2.00	1.50	1.50	1.50	0.0%
Temporary Hire	-	-	-	-	-	--

Accomplishments:

- Provided continual advice to HR and Sheriff’s Office regarding employment and labor law issues
- Worked with planning staff to revise development code
- Worked with health department to devise method of contracting for wholesale medical supplies
- Successfully defended tax appeal case
- Worked with planning staff on Measure 37 claim process and claims review
- Revised county contract code

Objectives:

- Work with planning staff on land use applications arising from Measure 37 waivers
- Work with planning commission on Measure 37-related land use issues
- Maintain 99% rate for contract turnaround within 3 days
- Locate and participate in law enforcement labor related educational training

Law Library

Board of Commissioners - General Fund

Purpose:

Maintain legal reference materials available to the legal community and citizens. The office of County Counsel oversees the Law Library.

Resource / Expense Category	2004-05	2005-07	2007-09	2007-09	2009-11	% Change
	Annual Actual	Biennium Actual	Biennium Adopted	Biennium Adjusted	Biennium Adopted	Over Adjusted
General Revenues	-	-	-	-	-	--
Program Income	51,241	103,531	101,000	101,000	103,846	2.8%
Beginning Balance	-	3,200	6,408	6,408	-	-100.0%
Resources	51,241	106,731	107,408	107,408	103,846	-3.3%
Personnel Services	9,048	18,972	20,913	20,913	22,111	5.7%
Materials & Services	38,992	74,827	85,650	85,650	81,735	-4.6%
Capital Outlay	-	-	-	-	-	--
All Other	-	-	845	845	-	-100.0%
Budget Total	48,040	93,799	107,408	107,408	103,846	-3.3%
Full-Time-Equivalent (FTE) by Type						
Regular (Greater than .50 FTE)	-	-	-	-	-	--
Temporary Hire	0.30	0.30	0.30	0.30	0.30	0.0%

Accomplishments:

- Successfully maintained material collection despite steady cost increases and static funding source

Objectives:

- Continue to refine and streamline law library materials and direction
- Maintain updated and relevant resources in face of increasing materials costs

- The law library is funded by a fee set by state law. The fee is collected at the time of filing civil cases in state court.

Water Project

Board of Commissioners - General Fund

Purpose:

Develop a countywide water quantity and quality assessment as a first step to ensure a sustainable water supply for Benton County and Willamette Basin citizens, their livelihoods, and their environment through time.

Resource / Expense Category	2004-05 Annual Actual	2005-07 Biennium Actual	2007-09 Biennium Adopted	2007-09 Biennium Adjusted	2009-11 Biennium Adopted	% Change Over Adjusted
General Revenues	-	-	50,000	50,000	48,521	-3.0%
Program Income	-	-	40,000	40,000	39,877	-0.3%
Beginning Balance	-	-	-	-	-	--
Resources	-	-	90,000	90,000	88,398	-1.8%
Personnel Services	-	-	-	-	80,857	--
Materials & Services	-	-	90,000	90,000	7,541	-91.6%
Capital Outlay	-	-	-	-	-	--
All Other	-	-	-	-	-	--
Budget Total	-	-	90,000	90,000	88,398	-1.8%
Full-Time-Equivalent (FTE) by Type						
Regular (Greater than .50 FTE)	-	-	-	1.00	-	-100.0%
Temporary Hire	-	-	-	0.40	-	-100.0%

Accomplishments:

- The Benton County Water Project launched through the appointment of a steering committee and strong community participation at several public meetings. The project is the first step in moving toward a regional approach to gathering and compiling information about groundwater and water usage, as well as water needs in the area.
- Amended Benton County Code, Chapters 95, 97 and 99 Ordinance No. 2007-0224 to set Water Supply Standards to the Code. The Ordinance became effective November 15, 2007.

Budget Note:

The proposed budget terminates this program halfway through the biennium. County budget rules count the FTE as zero since the position will not exist at the end of the biennium and no costs are presumed to roll forward to the next biennium to be maintained. In the 2007-09 the budget was originally assumed to include only contracted services. Soon after a full-time position was established, but formal transfer of funds between categories was not done.