

Why is the County Doing This?

Benton County waterways are valued by citizens throughout the watershed for their many beneficial uses, including:

- Water Supply
- Irrigation
- Livestock watering
- Fish and aquatic life
- Wildlife and hunting
- Fishing
- Boating
- Recreation
- Scenic quality

Riparian areas filter pollutants, shade and cool the stream, provide flood relief, create habitat for fish and wildlife, and enhance property values.

State Goals—Under the Oregon Statewide Planning Program, local jurisdictions are required to plan for various natural resources. Goal 5 states that the county shall inventory, evaluate, and protect riparian corridors along fish-bearing streams. Goal 6 requires that land use plans ensure that water quality will be maintained.

County Goals—Public input shaped Benton County’s Comprehensive Plan, which states that the County shall “adopt a protection program for significant riparian areas.”

Clean Water Requirements—Some Willamette Basin streams exceed safe levels of mercury, bacteria, and/or temperature. Oregon DEQ requires the county to reduce these levels to meet Total Maximum Daily Loads standards. The Riparian and Wetlands Project will help meet the pollutant reduction requirements.



Willamette River

Alsea River

Find links to additional tools for landowners on our website!

- How do I manage blackberries and other invasive plant species?
- Where can I find funding and technical assistance for projects on my property?
- What plants are best to plant in my riparian zone?



<http://www.co.benton.or.us/cd/riparian/resources.php>

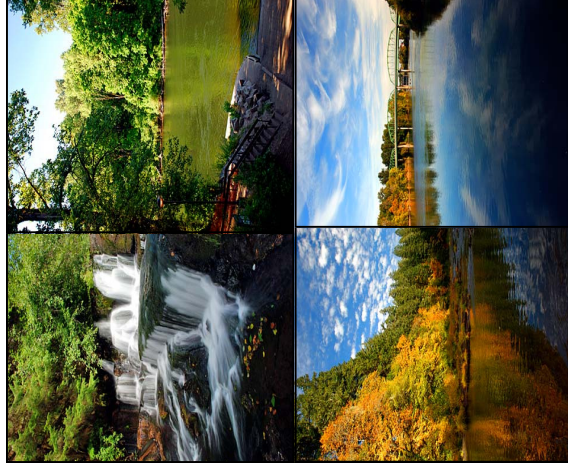
For more information:

Call (541) 766-6085

Sign up for the Riparian and Wetlands mailing list: www.co.benton.or.us/maillist.php



The Riparian and Wetlands Project - What is it and will it affect me?



The Riparian and Wetlands Project creates a plan to support and improve natural function of streams, riparian areas and wetlands within the unincorporated areas of Benton County.

Benton County Riparian and Wetlands Advisory Group



www.co.benton.or.us/cd/riparian

The Riparian and Wetlands Project WILL...

- Support the continued use and maintenance of legally established land uses on all lands
- Encourage the planting of native vegetation and restoration activities
- Focus on the streams and rivers identified in the Inventory Report as fish-bearing in the Aalsea Basin and fish-bearing or perennial in the Willamette Basin
- Continue to allow the removal of hazardous trees, trimming of native vegetation and removal of non-native or invasive vegetation
- Provide education and outreach on the importance of riparian and wetland resources
- Help connect landowners with available incentives for protecting/enhancing resources
- Provide flexible methods for allowing desired legal uses while protecting important resources

The Riparian and Wetlands Project WILL NOT...

- Apply to farming or forestry activities approved by Oregon Dept. of Agriculture or Oregon Dept. of Forestry, regardless of zoning
- Apply to ditches or water bodies not identified in the Inventory Report
- Result in the County taking any private land
- Allow public access on any private lands
- Prohibit the use or rebuilding of legal structures currently within a riparian buffer

Zoning and Land Use

Zoning- The unincorporated areas of Benton County are divided into zones which establish the allowable uses of land in a given area. Examples of zones in Benton County are:

- Exclusive Farm Use
- Forest Conservation
- Rural Residential
- Urban Residential
- Industrial

The land use triggers compliance with the Stream and Riparian Corridor Overlay, not zoning

Land Use- The actual activity a property is used for. Each zone has a number of acceptable land uses as stated in Benton County's Development Code.



Does this apply to me?

As proposed, the draft Stream and Riparian Corridor Overlay zone would apply within:

- 75 ft of the Willamette River
- 50 ft of any fish-bearing stream
- 50 ft of any perennial stream in the Willamette basin
- 25 ft of any other stream

This is not a "no touch" zone. Certain land use activities would be limited in these areas, while other land use activities (such as farming and forestry conducted in compliance with state rules) would be allowed. *See the draft code for details.*

Would This Apply To...?



Forestry activities regulated by the Oregon Forest Practices Act—**Would not apply**



Agricultural activities regulated by the Oregon Dept. of Agriculture—

Would not apply



Construction or vegetation-clearing on a lot with stream or wetlands—**Would apply**

