

Benton County Prairie Species HCP



October 2007

What is happening with the HCP?



Pair of Fender's blue butterflies.

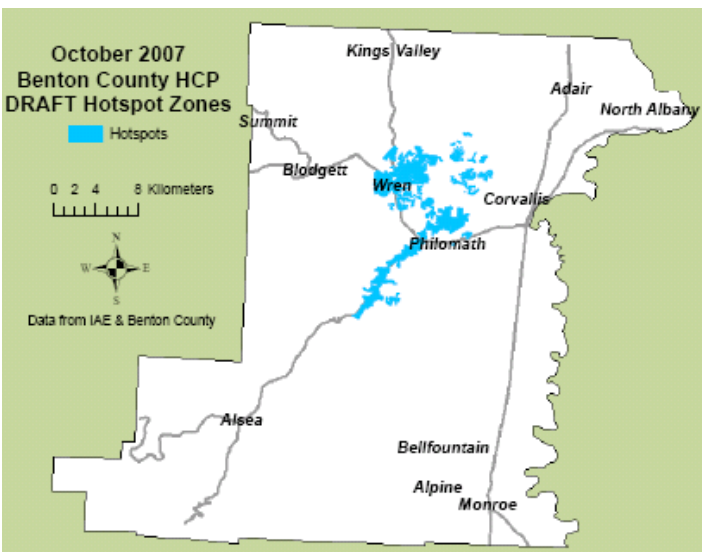
Analysis of 2007 Data

Data collected in the 2007 field season are being compiled to develop maps of HCP species distributions and assess where impacts to HCP species may occur.

Hotspot GIS mapping

Maps of areas in the County that are likely to have Fender's blue butterfly habitat are being generated using information about known locations of the butterflies, butterfly habitat requirements and dispersal distances. These zones of likely Fender's blue occurrence will serve as areas of caution in County permitting until the HCP is in place. Mapping techniques and draft maps have been reviewed by the butterfly technical advisory committee and the US Fish and Wildlife Service (USFWS), and are under review by Benton County staff. Maps are likely to change in the future as more information becomes available from HCP survey work.

Map of Benton County showing draft hotspot zones for Fender's blue butterflies. The map includes labels for Kings Valley, Adair, North Albany, Summit, Blodgett, Wren, Corvallis, Philomath, Alsea, Bellfountain, Alpine, and Monroe. A legend indicates 'Hotspots' in blue. A scale bar shows 0, 2, 4, and 8 kilometers. A compass rose is also present. Text at the bottom left of the map area reads 'Data from IAE & Benton County'.



This draft map is under review by the Benton County Board of Commissioners and Benton County staff. Hotspot areas, areas likely to support Fender's blue butterfly, are shaded on the map.

Benton County Prairie Species HCP Proposed Covered Species:

Plants:

- Kincaid's lupine
- Nelson's checkermallow
- Bradshaw's lomatium
- Willamette daisy
- peacock larkspur

Butterflies:

- Fender's blue
- Taylor's checkerspot

Bird: Streaked Horned Lark

Management plans

Recommendations for County vegetation management activities such as mowing, herbicide application, and burning are being developed for each of the species covered by the HCP. These recommendations will assist road maintenance personnel, and restoration practitioners with developing management

strategies that enhance prairie habitat by controlling invasions of woody and non-native species while minimizing the risk of harming rare species.

HCP Resources on the web

A list of weeds and pictures of select prairie plant species of Benton County are available on the HCP website. This information will help landowners/managers identify weed species that have the potential to dramatically reduce habitat quality. The new web info will also help landowners/managers recognize plants which are native to prairies of our region.



Meadow knapweed, a non-native plant invading Benton County grasslands.

Upcoming Meetings

Stakeholder Advisory Committee

Oct. 9, 2007, 3-5 pm, Corvallis-Benton Co. Public Library

Public Meeting

Oct. 15, 2007, 6-8 pm, Benton Plaza
Plaza (Lower) Meeting Room
408 SW Monroe Ave., Corvallis, Oregon

Please join us at the public meeting to learn more about the HCP and give input into its development!

For more information check out our webpage at: <http://www.co.benton.or.us/parks/hcp>
or email us at: hcpinfo@co.benton.or.us

2007 Field Surveys Concluded



A second season of on-the-ground field surveys has been completed. Prior to site visits, each site was evaluated using aerial photos to target areas with prairie, wet prairie, oak savanna, or oak woodland habitat for survey.

Botanical field assessments - April 12-July 13, 2007

(by Institute for Applied Ecology)

- Significant new Kincaid's lupine populations found on OSU property.
- Multiple small Kincaid's lupine populations found in King's Valley.
- Four additional Kincaid's lupine populations found in the Wren/Cardwell Hill area.
- Two new Bradshaw's lomatium populations found in the Muddy Creek corridor.

Botanical survey areas:

Private.....	2105 acres
OSU	1848 acres
Benton County.....	219 acres
ODFW.....	48 acres
City of Corvallis.....	39 acres
ODOT.....	4 acres

Butterfly surveys (by Dana Ross)

Taylor's checkerspot - April 19-May 11, 2007

- Historic populations visited at Fitton Green, Ft. Hoskins, and 16 additional sites.
- No new checkerspot populations were discovered.

Fender's blue - May 8-June 5, 2007

- Wren lupine populations were surveyed and estimated to support 400-500 butterflies.
- No new Fender's blue populations outside the Wren area were discovered.

Streaked Horned Lark surveys (by Randy Moore)

- Benton County right-of-way and conservation easement sites were surveyed.
- Nesting pair found off Herbert Rd. (City of Corvallis).
- Multiple pairs found on a conservation easement site south of Corvallis.

Vegetation mapping and conservation reserve

connectivity analysis (by Sara Mulford, University of Vermont & IAE)



Willamette daisy

- Completed mapping of potential conservation reserve sites in Benton County
- Using "gap analysis" to evaluate future reintroduction sites and their connectivity to known populations.

Survey Planning for Spring & Summer 2008



Kincaid's lupine

In 2008, Benton County will be continuing to survey properties of willing private landowners that have the potential to support the species covered by the HCP.

Surveys will be conducted on current or historical upland prairie, wet prairie, or oak savanna. The goal of these surveys is to assist the County in understanding where the species are located, the habitats they depend on, and how many individuals of these rare species there are in the County. Even if the species are not present on a parcel of property, the County is still interested in examining examples of high quality native habitat to provide critical information for habitat restoration.

You can request a survey of your property by submitting a field survey request form available from the county website

(www.co.benton.or.us/parks/hcp/surveyrequest.php) or by calling Carolyn Menke or Lori Wisheart at Institute for Applied Ecology (541) 753-3099.



Peacock larkspur

Surveys are usually conducted from late April through mid- July. If you volunteer to have your property surveyed for the HCP, and your property is selected, you will be contacted in April 2008 to schedule a survey visit. Properties will be selected for survey based on the likelihood that the species and habitats that the HCP is focused on are present on your land.

Why get a survey?

- Learn about the plants and animals on your property, including any rare and protected species.
- Find out if you have any rare species on your property now to prevent accidental harm in the future.
- Obtaining a free survey now may eliminate the need for future surveys of these species.
- Based on the habitats/species present on your land, you may be eligible to participate in county, state, or federal programs providing incentives to landowners interested in conservation & property management.

For more information check out our webpage at: <http://www.co.benton.or.us/parks/hcp> or email us at: hcpinfo@co.benton.or.us