



Benton County Prairie Species Habitat Conservation Plan



Stakeholder Advisory Committee
October 9, 2007

Last HCP Stakeholder's Meeting, March 15, 2007

- Reviewed progress
- Discussed covered species/activities/lands
- Discussed 2007 field season planning
- Briefly reviewed potential conservation measures

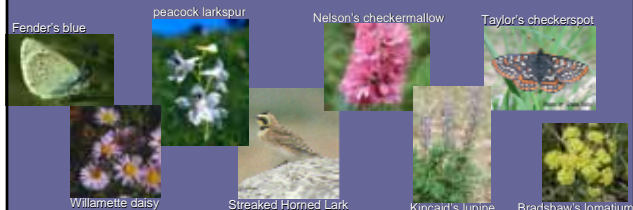
Today's Agenda

- Brief re-introduction to the HCP
- HCP Update
- Conservation Measures
- Process/Procedures of cooperating with HCP
- Conservation Easements (Greenbelt Land Trust)
- OSU College of Forestry Oak Strategy Project
- Stakeholder Questions
- Public Comment

A Habitat Conservation Plan for Benton County

Goal:

- Balance conservation of rare species and their habitats with economic growth and development in Benton County



What is a Habitat Conservation Plan?

A plan specifying the:

- (1) Likely harm to endangered/threatened species resulting from County activities (and others)
- (2) Steps to avoid, minimize, and mitigate such harm – Conservation Measures
- (3) Funding available to implement the conservation measures

Why does Benton County want a HCP?

- **Research through the HCP process:**
 - Learn about rare species distributions & habitats
 - Use info to benefit conservation in the County
- **With approved HCP, USFWS will issue Benton County an Incidental Take Permit**
 - Protects the County from legal liability if unavoidable or accidental harm to species takes place
 - Coverage can be offered to other landowners
- **HCP will make additional funding options available**

Proposed Permit Area:

Who can be covered for what species?

	County Lands	Other Public lands	Private lands
Fender's blue:	X	X	X
Taylor's Checkerspot:	X	If opt-in	
Lark:	X	If opt-in	
Plants:	X	If opt-in	

Will also need ODA Permit

Estimated Timeline

2006

- Field assessments
 - April-July
- TAC and SAC meetings

2007

- Public Meetings
 - January, October
- TAC and SAC meetings
- Field assessments
 - April-July
- In-house HCP draft

2008

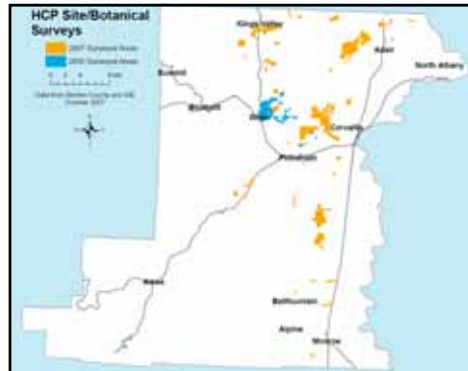
- Public draft HCP Document
 - April/May
- Public Meetings
- TAC and SAC meetings
- Field assessments
 - April-July

2009

- Draft NEPA document
- Finalize HCP
- Final NEPA documentation
- Incidental Take Permit Issued

HCP Update

- Field surveys
- Fender's blue "Hotspot" Mapping

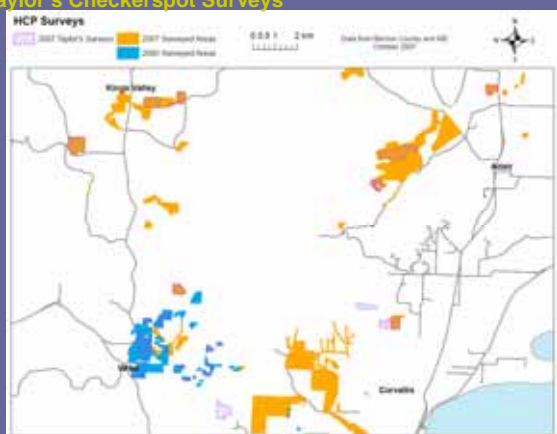


Fieldwork Summary

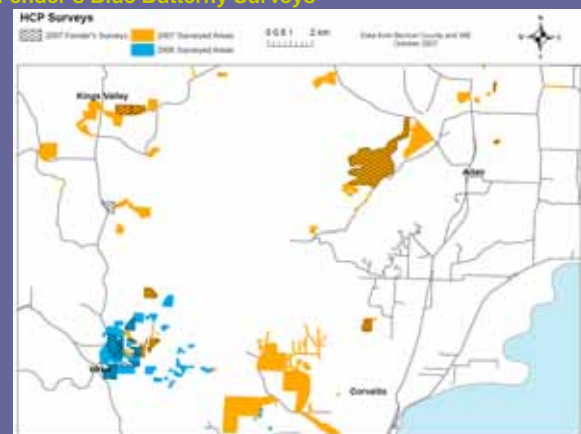
- Targets: Public lands, WRP sites, Luckiamute Watershed
- Cooperated with GLT & LWC to select landowners

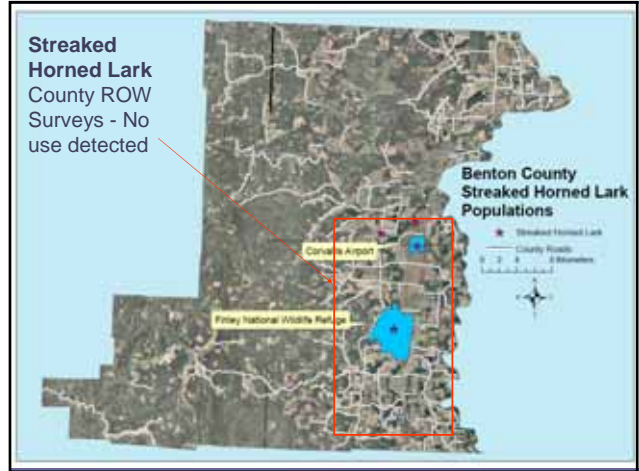
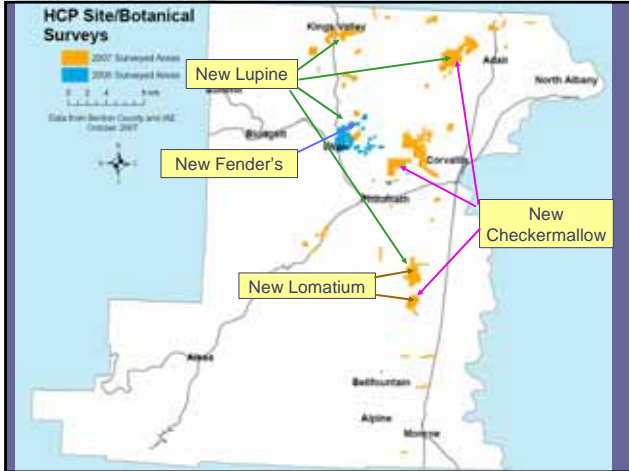
2007 Botanical/Site Assessments
 >4000 acres: 50-50 Public-Private

Taylor's Checkerspot Surveys



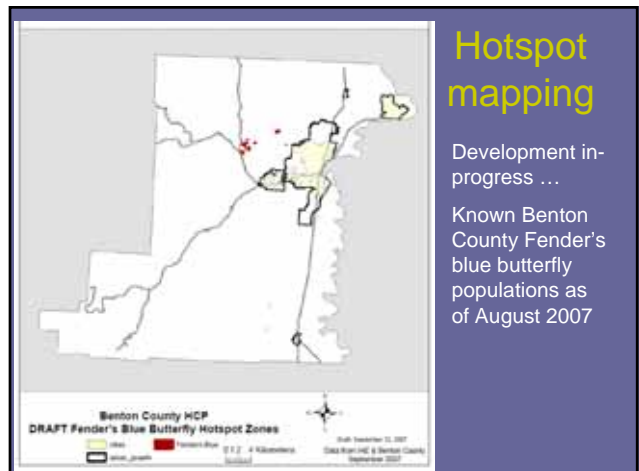
Fender's Blue Butterfly Surveys

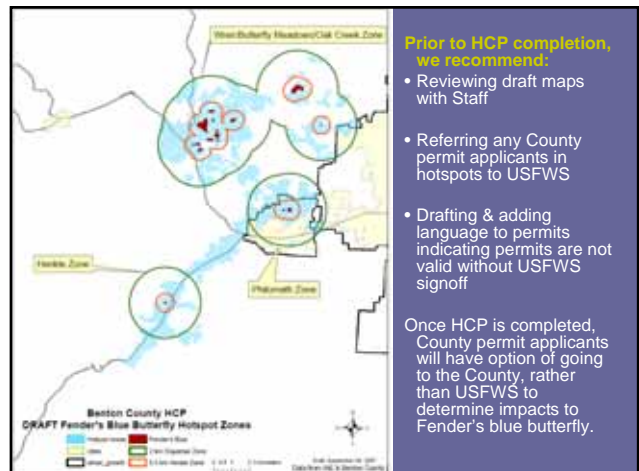
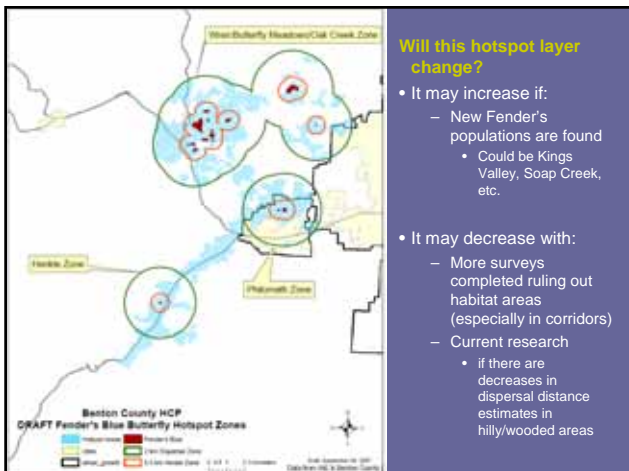
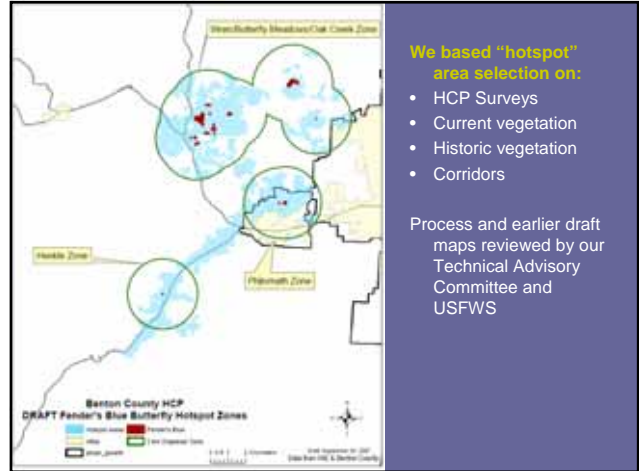
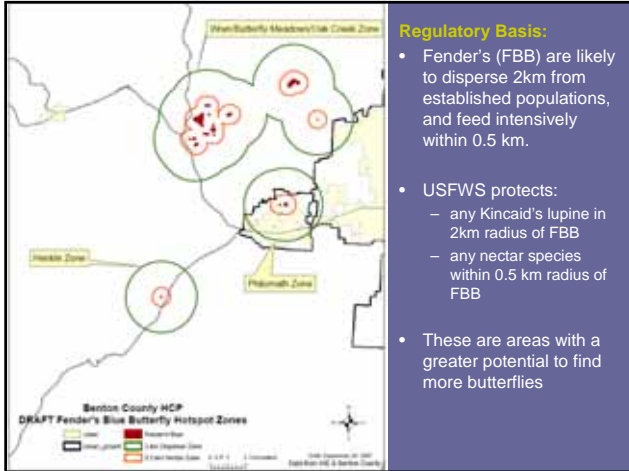




Sites/Species/Ownership

	BC	Corvallis	OSU	ODOT	ODFW	Private	Total
Lark		2				1	3
Taylor's	2					2	4
Fender's	5		1			13	19
Lupine	13	2	2	1	1	29	48
Larkspur	3	3		2		2	10
Checkermallow	10	8	3	3	1	9	34
Lomatium	1	1				3	5
Daisy		1				2	3
Total	34	17	6	6	2	61	126





Follow up questions

- Do you have questions about the hotspot process?
- We plan to focus surveys in 2008 on:
 - hotspot zones and adjoining habitat
 - Gaps – area of no known surveys (south of Finley, East of 99)
 - Letters, phone follow-up, local meetings
 - Eager for survey suggestions?

Proposed Conservation Measures

- What is a conservation measure?
 - Any activity taken to proactively avoid, minimize, or mitigate (offset) impacts to species

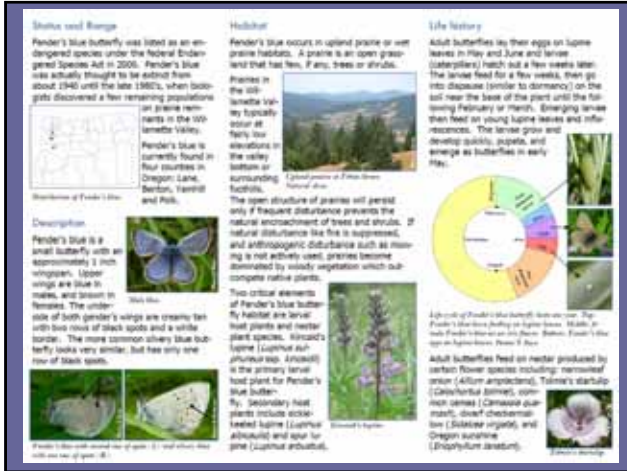
Proposed Conservation Measures

- **Examples:**
 - Public Education
 - Management Plans
 - On-site Mitigation
 - Payment of mitigation fee
 - Candidate Conservation Agreement
 - Conservation Easement In-Lieu
 - Timing Restrictions/Special Management Areas
 - Construction Best Management Practices
 - Habitat Acquisition
 - Conservation Banking
 - Plant Material Collection
 - County Permitting Program

Proposed Conservation Measures

- **Species/Habitat Brochures (all species)**
 - For general distribution by Benton County, HCP staff... and others





Proposed Conservation Measures

- **Management Plans**
 - **Plants & Fender's Blue**
 - Roadsides: Guidelines for managing rare species in ROWs (in progress...working with TAC)
 - Natural Areas: Guidelines for managing spp in parks, etc. (in progress...working with TAC)
 - **Taylor's checkerspot**
 - Developing Management Plans for County owned or managed property with Taylor's
 - **Lark**
 - Will develop management strategies

Proposed Conservation Measures

Mitigation: For anyone impacting Fender's Blue

- **On-Site Mitigation**
 - Replacement of Nectar Species
 - Relocation of Kincaid's lupine plants
 - Possible Ratios (replaced: impacted)
 - 5:1 occupied habitat (Lupine + butterfly)
 - 3:1 unoccupied habitat (Lupine only)
 - 2:1 native nectar species

Proposed Conservation Measures

- **Impact Mitigation Fee**
 - Criteria considered for determining fee amount
 - Quality of habitat
 - Occupied or unoccupied habitat
 - Native vs. non-native nectar species
 - Quantity of habitat
 - Number of years remaining on permit
 - Cost to (1) restore/enhance, (2) maintain
 - Ratios

Proposed Conservation Measures

- Conservation Easement in-lieu
 - Protect any remaining occupied or unoccupied habitat in perpetuity
 - Will depend on total size of existing habitat and size of habitat affected

Proposed Conservation Measures

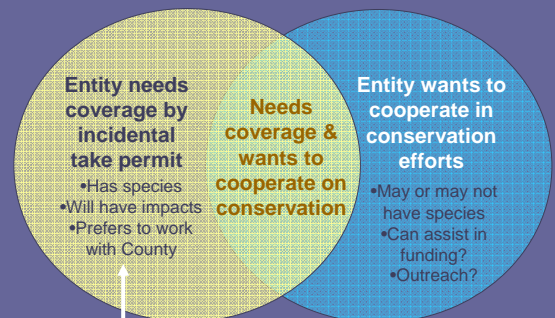
- County Permitting Process
 - Presence/Absence Survey Required
 - Is Fender's habitat present?
 - Certificate of Inclusion
 - Conservation Measures completed before permit issued

Proposed Conservation Measures

- How can your agency/organization contribute to conservation measures?
- Are other entities interested species management plans?

Process of cooperating with the HCP

Different options, depending on your needs & goals



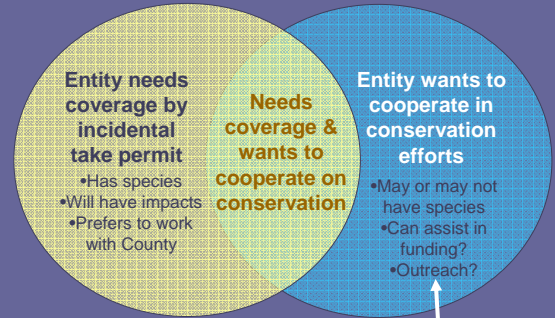
Will need to opt-in on project by project basis, through a Cooperative Agreement/Permit and Certificate of Inclusion

What is a Cooperative Agreement and Certificate of Inclusion?

- **Cooperative Agreement:**
 - Agreement with Benton County binding the applicant to the relevant terms of the HCP (e.g., conservation measures/mitigation & reporting requirements)
- **Certificate of Inclusion:**
 - Document which specifically allows a certain amount of take for a specific project, through the County's Incidental Take Permit.

Process of cooperating with the HCP

Different options, depending on your needs & goals



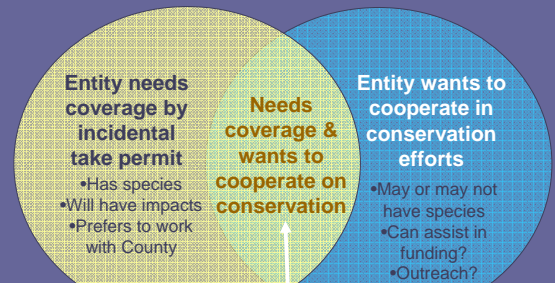
May want to sign on to Declaration of Cooperation, participate in Prairie Conservation Strategy portion of HCP

Prairie Conservation Strategy

- **A conservation measure**
 - Medium to cooperate on conservation efforts in Benton County
 - Non-regulatory
 - Any and all entities/individuals could participate
 - Ideally, will be local implementation of Prairie Recovery Plan
 - Guide planning of restoration/species introductions

Process of cooperating with the HCP

Different options, depending on your needs & goals



May want to sign on to Declaration of Cooperation, participate in Prairie Conservation Strategy portion of HCP, get Cooperative Agreement/Certificate of Inclusion for projects needing take coverage.

Process of cooperating with the HCP

Different options, depending on your needs & goals

- What questions/concerns do you have about this process?
- City of Corvallis has been frontrunner in cooperation
- What other entities may be interested?
 - ODOT?
 - Cities of Philomath, Adair Village, Albany, Monroe?
 - Oregon State University?
 - Conservation organizations?
 - Private Landowners?

Conservation Easement Acquisition

- Karlene McCabe, Greenbelt Land Trust

OSU College of Forestry: Oak Strategy Project

- Brad Withrow-Robinson
- David Lysne

Stakeholder Questions?

Public Comments?