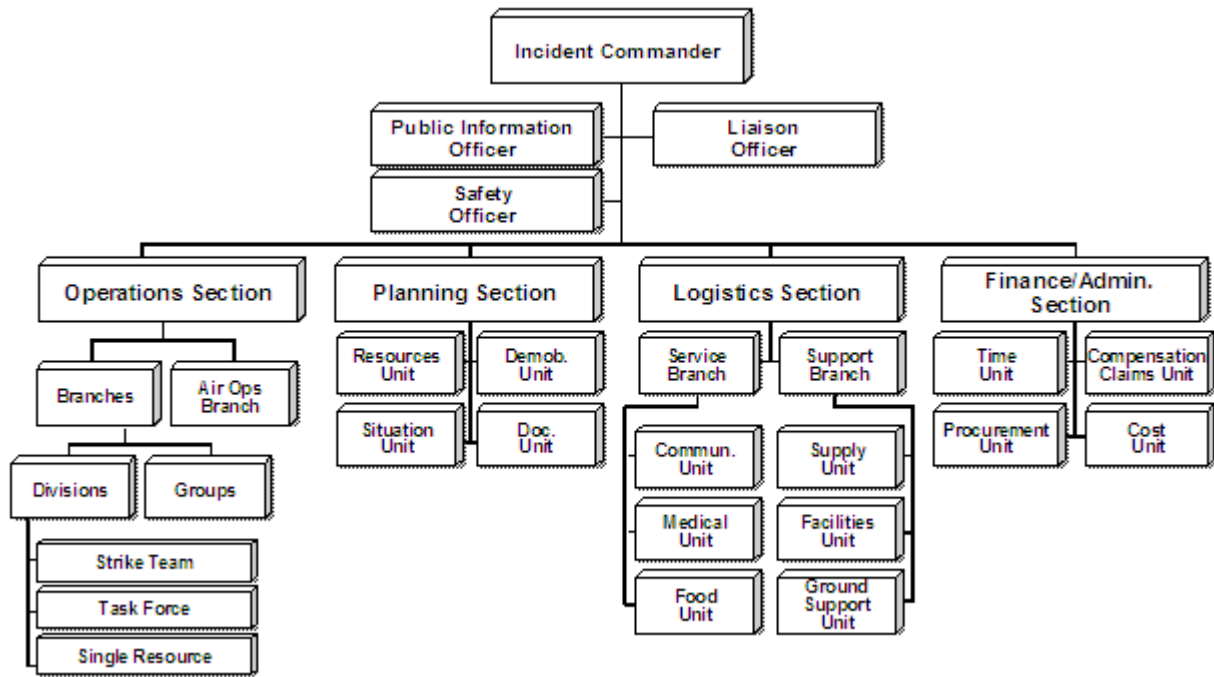


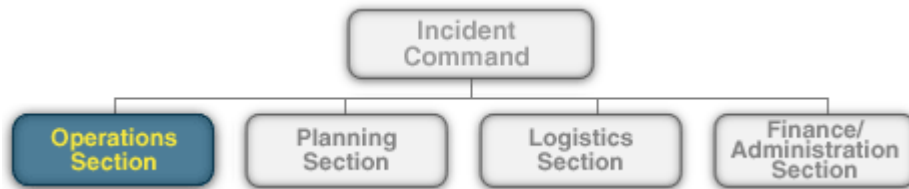
The searcher and ICS - an introduction

## ICS Big Picture:



## Operations Section

Until Operations is established as a separate Section, the Incident Commander has direct control of tactical resources. The Incident Commander will determine the need for a separate Operations Section at an incident or event. When the Incident Commander activates an Operations Section, he or she will assign an individual as the Operations Section Chief.



Searchers fall within the Operations Section of the ICS structure.

As a searcher, you may be referred to as a single resource or as a team member. In most cases you will be assigned to a team. Your team may be a Strike Team or a Task Force.

**Single Resources** may be individuals, a piece of equipment and its personnel complement, or a crew or team of individuals with an identified supervisor that can be used at an incident.

**Strike Teams** are a set number of resources of the same kind and type with common communications operating under the direct supervision of a Strike Team Leader. Strike Teams are

highly effective management units. The foreknowledge that all elements have the same capability and the knowledge of how many will be applied allows for better planning, ordering, utilization and management.

Strike Team Examples:

- Tracker Team
- High Angle Team
- Grid Searchers
- Road Searchers
- Mounted Searchers

**Task Forces** are a combination of mixed resources with common communications operating under the direct supervision of a Leader. Task Forces can be versatile combinations of resources and their use is encouraged. The combining of resources into Task Forces allows for several resource elements to be managed under one individual's supervision, thus lessening the span of control of the Supervisor.

Task Force Example:

- Man-tracker, Wilderness First Aid Responder, and other skill or support

Whatever your assignment is, the first thing you need to know is who your supervisor is. You will have only one supervisor. This is who you will get all of your directions from. This is referred to as Unity of Command.

In the Incident Command System:

- **Chain of command** means that there is an orderly line of authority within the ranks of the organization, with lower levels subordinate to, and connected to, higher levels.
- **Unity of command** means that every individual is accountable to only one designated supervisor to whom they report at the scene of an incident.

## ICS Supervisory Position Titles

Titles for all ICS supervisory levels are shown in the table below:

Organizational Level	Title	Support Position
Incident Command	Incident Commander	Deputy
Command Staff	Officer	Assistant
General Staff (Section)	Chief	Deputy
Branch	Director	Deputy
Division/Group	Supervisor	N/A
Unit	Leader	Manager
Strike Team/Task Force	Leader	Single Resource Boss

As you gain experience, you may be placed in a supervisory role.

## Incident Facilities

- The **Incident Command Post**, or ICP, is the location from which the Incident Commander oversees all incident operations. There is generally only one ICP for each incident or event. The ICP may be located in a vehicle, trailer, tent, or within a building.
- **Staging Areas** are temporary locations at an incident where personnel and equipment are kept while waiting for tactical assignments. The resources in the Staging Area are always in **available** status. Staging Areas can be collocated with the ICP, Bases, Camps, Helibases, or Helispots.
- A **Base** is the location from which primary logistics and administrative functions are coordinated and administered.
- A **Camp** is equipped and staffed to provide food, water, sleeping areas, and sanitary services. Camps are designated by geographic location or number. Multiple Camps may be used, but not all incidents will have Camps.
- A **Helibase** is the location from which helicopter-centered air operations are conducted. Helibases are generally used on a more long-term basis and include such services as fueling and maintenance. **Helispots** are more temporary locations at the incident, where helicopters can safely land and take off. Multiple Helispots may be used.

## Common Terms

- Base
- Operations (Ops)
- Comm Van
- Emergency Operations Center (EOC)
- Emergency Command Center (ECC)
- Law Enforcement Center (LEC)
- Law Enforcement Building (LEB)