

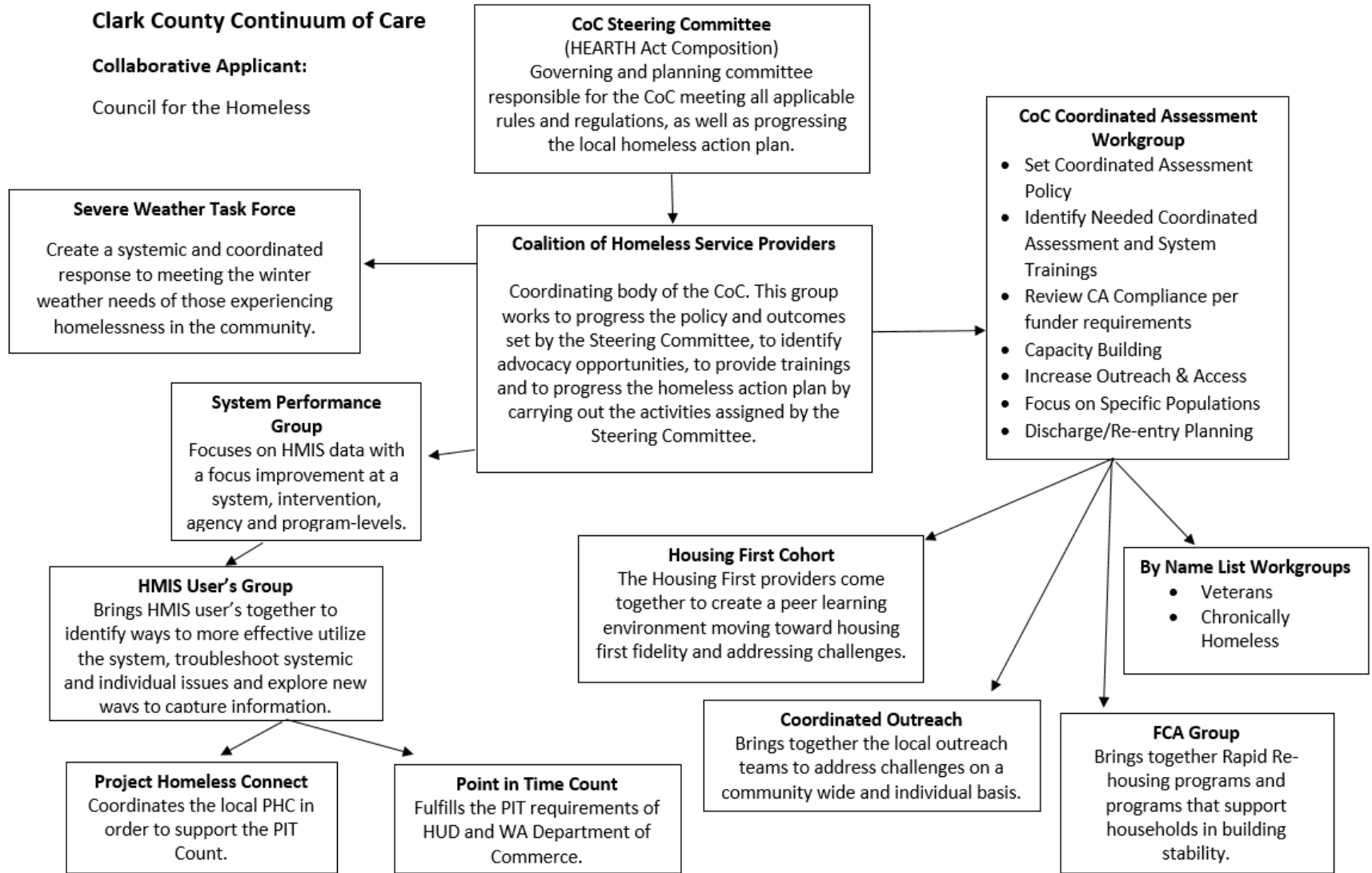
HOPE Advisory Board

Clark County Coordinated Entry

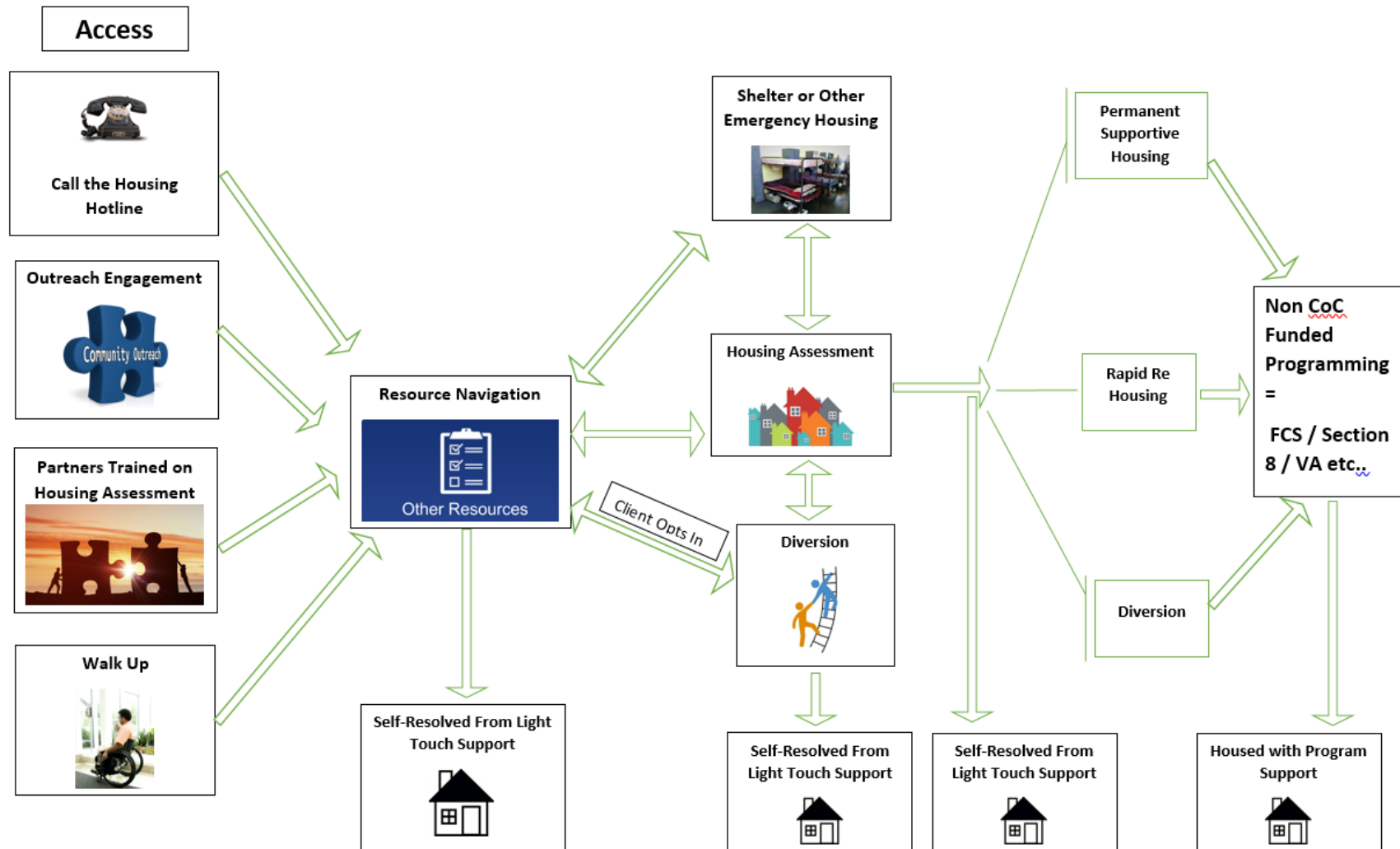
Melissa Baker
Council for the Homeless
4/27/2022



Clark County CoC Structure



Clark County Coordinated Entry Road Map



Coordinated Entry and Data

- How Has Coordinated Entry Affected Our Data Quality
- How Has Data Quality Affected Our Funding?



System Improvements

- Better Service Provision for Clients
- More Cost Effective
 - Using the least cost burdened methods first



Thank You!

QUESTIONS?

Melissa Baker

Coordinated Entry Director

Council for the Homeless

mbaker@councilforthehomeless.org

