

# Map of Restrictions on Oversize & Overweight Vehicles and Combinations

Department of Public Works  
(541) 766 6821

## LEGEND

- Paved Road
  - Gravel Road
  - Forest Service Road - Separate permit is required  
Contact ODF - Tel: 541-929-9155
  - BLM Road - Separate permit is required  
Contact Contact BLM - Tel: 503-315-5988
  - Normal Usage Routes  
Contact each road district or private owner for road restrictions.  
Legal weight is 40 tons. All truck trailer combinations are restricted to 75 feet in overall length
  - Preferred Overweight High Vehicle Route
  - Length and Width Restrictions -  
Loads greater than 10' wide require 2 pilots  
Loads greater than 50' long require 2 pilots
  - High Vehicle Route -  
Loads greater than 15' wide require traffic plan  
Loads over 14'-6" high require height pole  
Loads over 17' high are prohibited
  - Corridor Restricted to Legal Loads Only  
Alternative Routes: Coon Rd, Nichols Rd, Greenberry Rd
  - Weight Restricted Roads with Posted Total Gross Vehicle Weight In Tons
  - State or Federal Jurisdictional Roadways - Contact the appropriate agency for applicable road restrictions
  - Bridges with Height Restrictions (feet - inches)
  - Approved for legal loads
  - Bridges restricted to legal axle weights, and 40 tons
  - Overdimensional loads NTE 25 mph
  - Closed Bridges
  - Bridges with posted weight restrictions (tons)
  - Loads over 95' must stop traffic using certified flaggers
  - City Limits - contact each city for applicable road restrictions and permit information
- State Highways - Contact ODOT Motor Carrier Transportation Division Permit Unit for Information at 1-503-373-0000.

## LEGAL LOAD DIMENSIONS

Legal Height = 14' - 6"  
Legal Weight =  
20,000 lbs on single  
34,000 lbs on tandem  
Legal Width = 8' - 6"  
Legal Load Length = 40'  
Legal Length of Truck  
Combination = 60' overall  
Log Truck Length  
Length = 65' overall  
Trucks Over 125'  
Require a minimum of 2 pilots  
and a traffic plan  
State OD Hotline 503-373-0000

**Harris Road Covered Bridge Posting:**  
Type 3 18 tons  
4 Axles (SU4) 16 tons  
5 Axles (SU5) 19 tons  
6-7 Axles (SU6, SU7) 22 tons  
Type 3S2 29 tons  
Type 3-3 36 tons  
Maximum Height 10'8"  
Maximum Width 15'6"  
Maximum Speed 10 mph

**Honeygrove Bridge Posting:**  
5 Axles (SU5) 27 tons  
6-7 Axles (SU6, SU7) 28 tons

**Hayden Road Covered Bridge**  
Weight 24,000 lbs (12 tons)  
Maximum Height 11' 6"  
Maximum Width 16' 0"  
Maximum speed 10 MPH

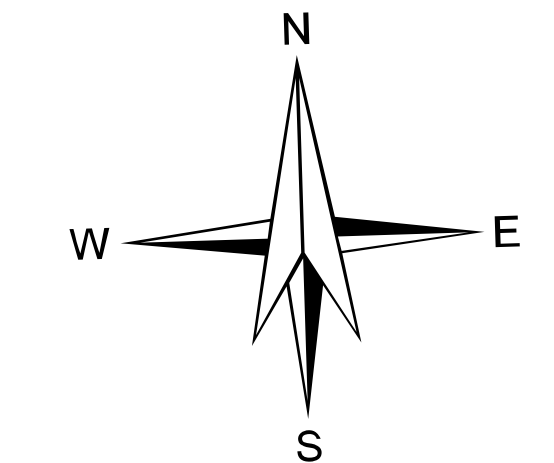
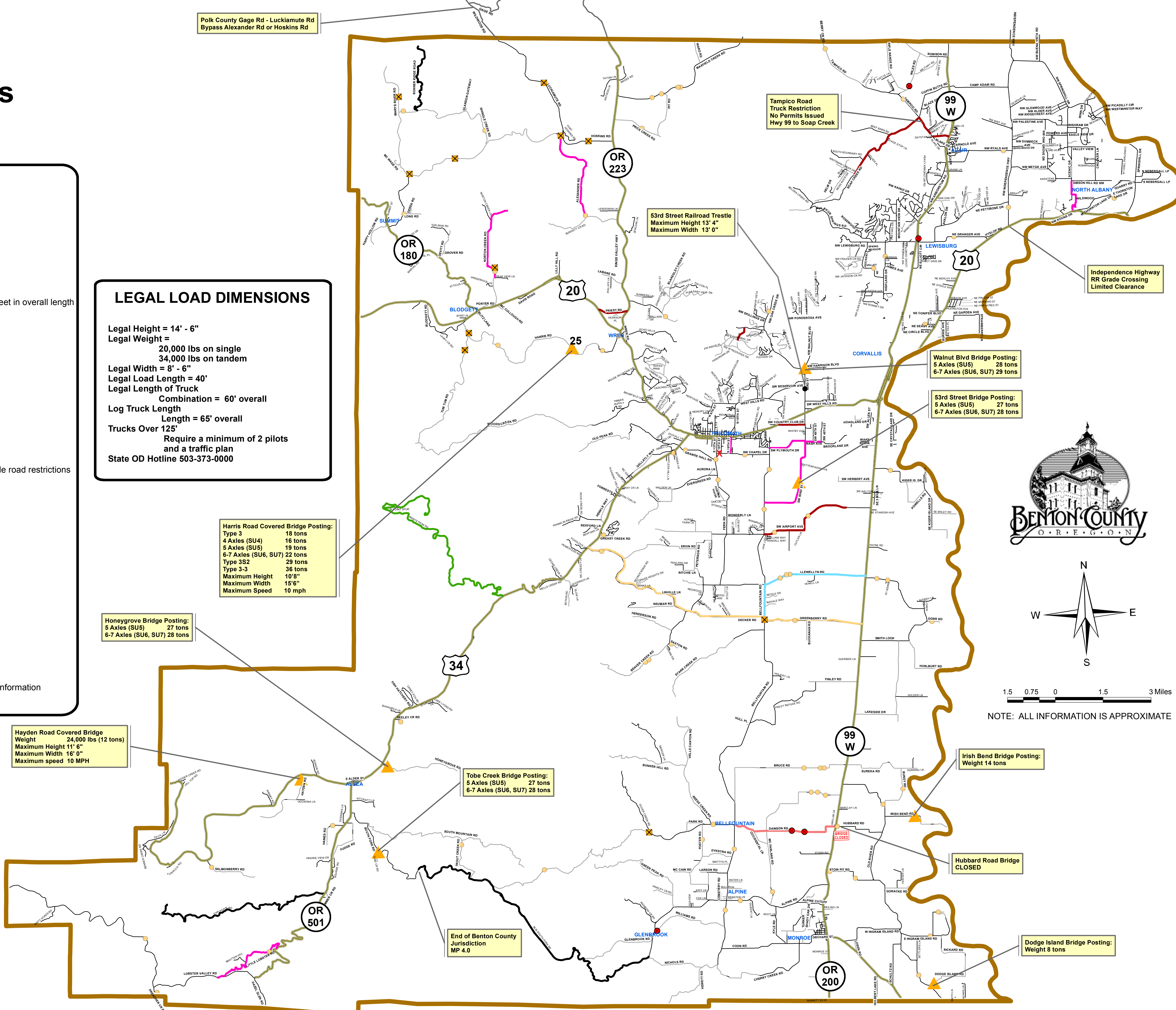
**Tobe Creek Bridge Posting:**  
5 Axles (SU5) 27 tons  
6-7 Axles (SU6, SU7) 28 tons

**Irish Bend Bridge Posting:**  
Weight 14 tons

**Hubbard Road Bridge**  
CLOSED

**Dodge Island Bridge Posting:**  
Weight 8 tons

**End of Benton County Jurisdiction**  
MP 4.0



NOTE: ALL INFORMATION IS APPROXIMATE

## BENTON COUNTY GENERAL PILOT VEHICLE REQUIREMENTS

	FRONT PILOTS REQUIRED	REAR PILOTS REQUIRED
<b>WIDTH</b>		
BETWEEN 8'-6" and 12'-0"	NONE	NONE
12'-0"	ONE	NONE
OVER 12'-0"	ONE	ONE
<b>LENGTH</b>		
LEGAL	NONE	NONE
OVER 65'-0"	ONE	NONE
100'-0" and OVER	ONE	ONE
<b>HEIGHT</b>		
LEGAL	NONE	NONE
14'-6" and OVER	ONE WITH HEIGHT POLE	NONE