

**GENERAL NOTES:**

1. Contact Pacific Power representative for coordination of service. Work Order □6327371. Estimator Deborah Todd, (541)967-6136.
2. Include in bid all Utility costs for service upgrade.
3. Available fault current at the Utility transformer is to be determined by Pacific Power.
4. Coordinate with utilities when trench is open for final approval of conduit installation.

**CONSTRUCTION NOTES:**

- ① Provide remote meter in accordance with Pacific Power Electric Service Requirements.
- ② Coordinate with Pacific Power for conduit, trenching and backfill requirements from PPL Pole □021206.

**SERVICE RESPONSIBILITIES**

**CONTRACTOR TO PROVIDE:**

All trenching and backfill. secondary conduit from transformer to metering equipment. utility pull section, service disconnect, meter center.

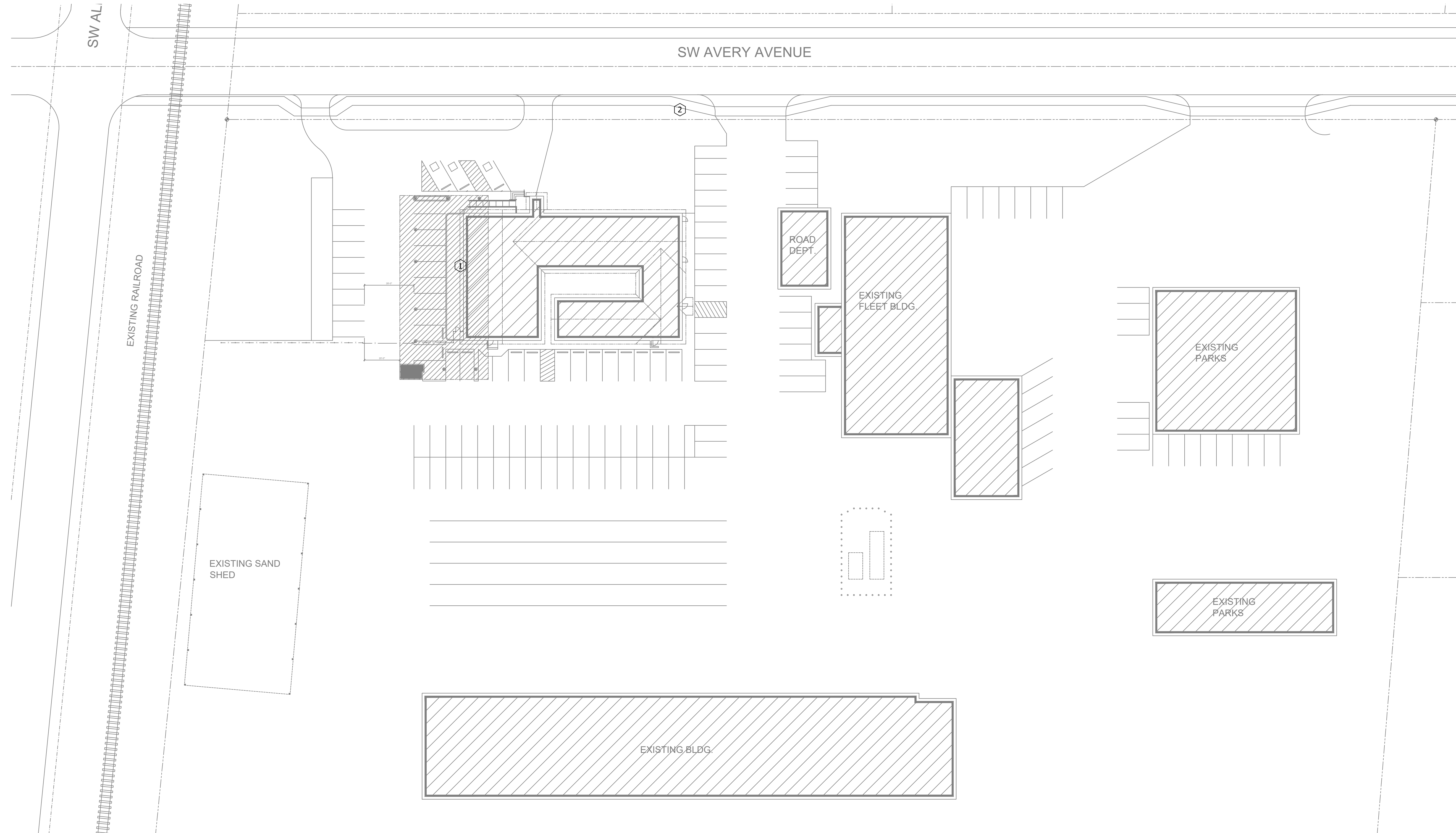
**UTILITY WILL PROVIDE:**

Pole mounted transformer. Secondary conductors between transformer and meter equipment with terminations. Meters with terminations.

Verify all requirements with utility during bidding phase of project and provide as required.

**LOAD SUMMARY**

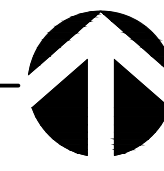
LIGHTING	4.7 KW
RECEPTACLES	35.1 KW
HVAC	24.3 KW
ELEVATOR	27.0 KW
TOTAL	92 KW
AVERAGE AMPS / PHASE	255 A
ELECTRICAL SERVICE	400 AMPS 120/208V
3 PHASE 4 WIRE	



1

**ELECTRICAL SITE PLAN**

SCALE: 1" = 30'



**CARLSON VEIT ARCHITECTS P.C.**  
 ARCHITECTURE • INTERIOR DESIGN  
 503-390-0281 • FAX 503-390-2459 • WWW.CARLSONVEIT.COM  
 3085 RIVER ROAD NORTH, SALEM, OREGON 97303  
 MEMBER AMERICAN INSTITUTE OF ARCHITECTS

REGISTERED PROFESSIONAL ENGINEER  
 45923PE  
 DIGITAL SIGNATURE  
 OREGON  
 JANUARY 11, 2005  
 LAUREL M. WONG  
 RENEWAL DATE JUNE-30-2018

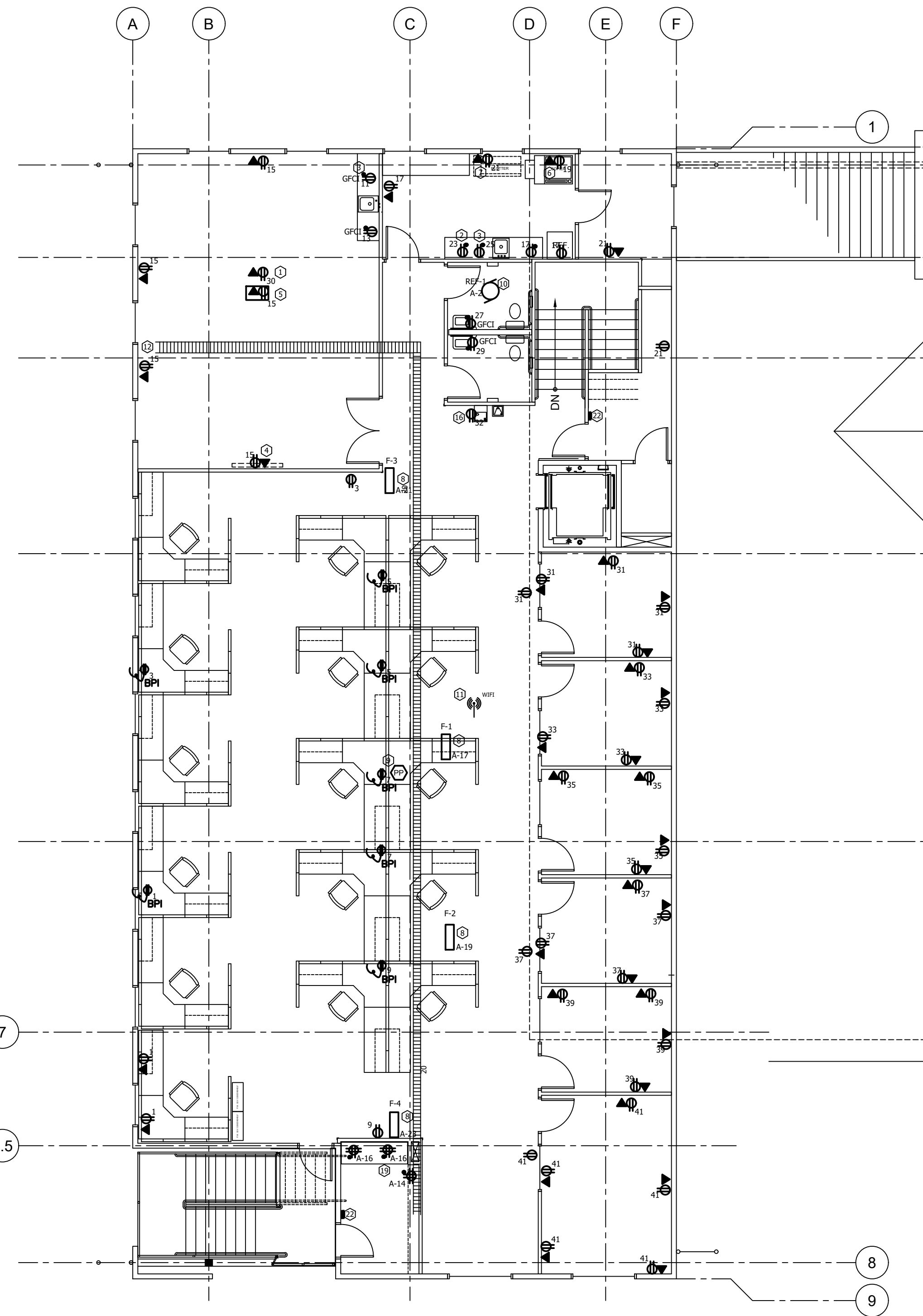
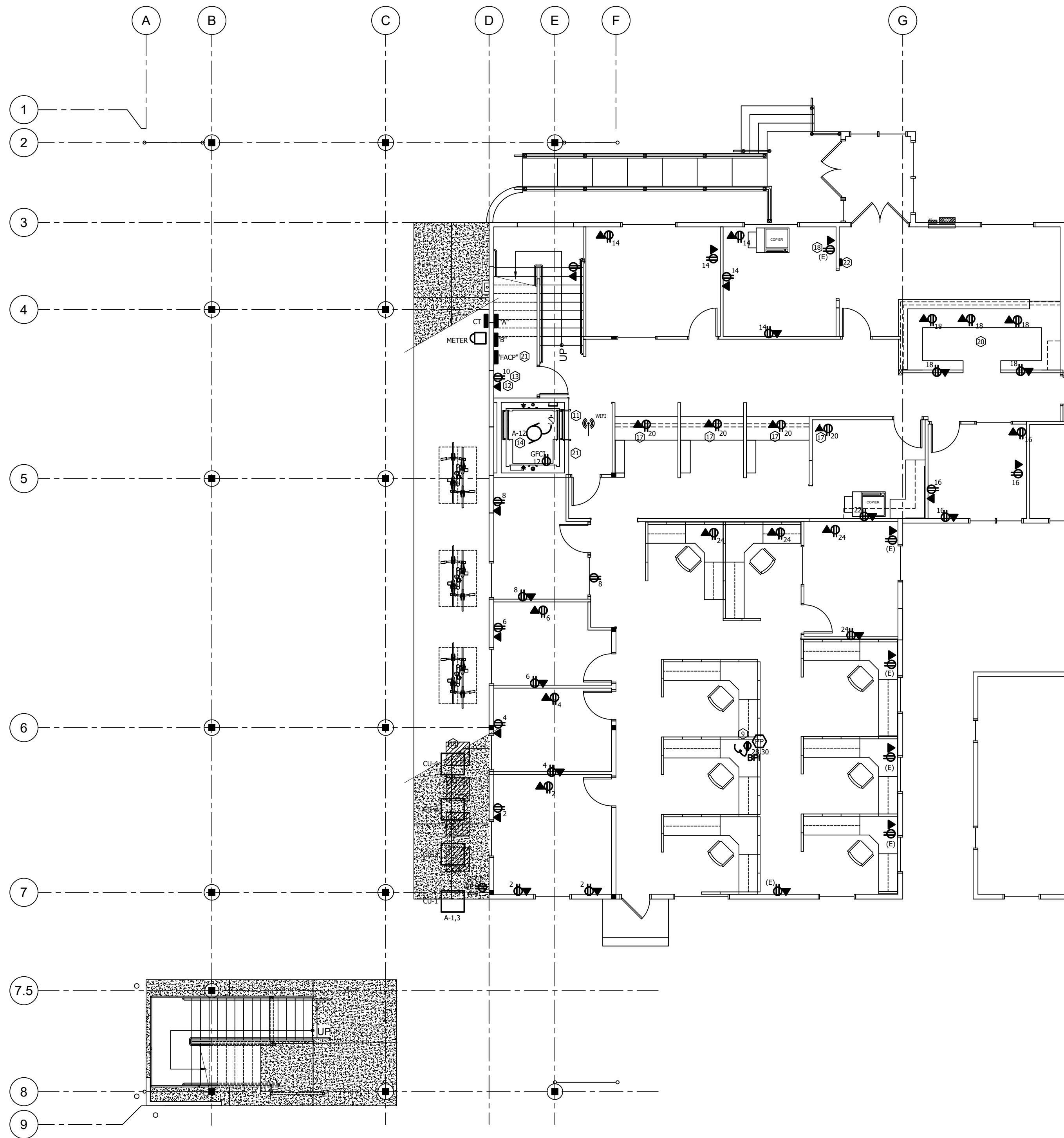
project: **AVERY COMPLEX ADDITION**  
 360 AVERY AVENUE  
 LICHTING PLAN  
 consultants: Environmental Engineering Services Inc.

revisions:  
 ▲  
 ▲  
 ▲  
 ▲

date: 04/19/2017  
 project: 11916  
 dwg file: 10CVA  
 drawn by: CJK  
 checked by: LMW  
 copyright © 2017  
 Carlson Veit Architects P.C.

**ELECTRICAL SITE PLAN**

sheet: **E1.0**  
 of:



**GENERAL NOTES:**

- All circuits to Panel "B" unless otherwise noted.
- Match existing receptacle faceplates and data jacks.

**CONSTRUCTION NOTES:**

- 1 Owner furnished projector, dedicated circuit, dedicated neutral, ceiling mount.
- 2 Microwave, dedicated circuit, dedicated neutral, above counter.
- 3 Coffee maker, dedicated circuit, dedicated neutral, above counter.
- 4 For Owner Furnished/Owner Installed LCD monitor, provide (1) duplex outlet at 72" A.F.F. and monitor cable from 72" A.F.F. box to connect to additional box at 18" A.F.F. or floor box at location indicated.
- 5 Provide Legrand RFB11 flush floor box with (1) electrical duplex outlet, (1) computer jack, monitor cable to LCD monitor. Verify location with architect.
- 6 Printer/Copier, dedicated circuit, dedicated neutral.
- 7 Plotter, dedicated circuit, dedicated neutral.
- 8 Provide and install conduit and conductors to attic furnaces, F-1, F-2, F-3, F-4.
- 9 Stub up conduit and conductors from IT room above ceiling and route to power pole for systems furniture power and data.
- 10 Switch exhaust fan EF-1 (located Exterior Room 204) with wall switch occupancy sensor.
- 11 Provide and install ceiling receptacle and Cat 6 cable junction box for Owner provided wireless hub. Confirm location with Owner.
- 12 Provide and install rack hardware, cable tray and an other fittings and fasteners to install cabling to code. Confirm brand, size and features with Owner prior to purchase.
- 13 Provide and install twist-lock receptacle at location of rack. Circuit to Panel "B" in IT room.
- 14 Provide and install conduit and conductors for sump pump in for elevator pit.
- 15 Provide and install conduit and conductors for exterior HVAC units.
- 16 Receptacle for drinking fountain. Confirm height and requirements.
- 17 Bring data and conduit and conductors from IT room above ceiling to new wall for devices in new cabinetry. See details Sheet A-202.
- 18 Reuse existing circuit preserved during demolition and stored above ceiling.
- 19 Receptacles located above cubicle shelves. Refer to details sheet A-203.
- 20 Receptacles located above work surface.
- 21 Provide and install fire alarm system control unit designated as "elevator recall control and supervisory panel". This panel shall receive input and monitor the smoke detectors dedicated to elevator recall per NFPA 72-2016 section 21.3.2. Provide smoke detectors in elevator lobbies and three circuits available to elevator installer.
- 22 Provide and install an area of rescue assistance two-way communications system in accordance with NFPA 72 2016 section 24.10. Rath Communications "System 1-10", or equal.

**1** **FIRST FLOOR POWER PLAN**  
 SCALE: 1/8" = 1'-0"

**2** **SECOND FLOOR POWER PLAN**  
 SCALE: 1/8" = 1'-0"