

GENERAL NOTES:

- Contact Pacific Power representative for coordination of service. Work Order #6327371. Estimator Kristi Wheeler, (541)967-6195.
- All Utility costs for service upgrade to be charged to Benton County Public Works.
- Available fault current at the Utility transformer is to be determined by Pacific Power.
- Coordinate with utilities when trench is open for final approval of conduit installation.

CONSTRUCTION NOTES:

- Provide remote meter in accordance with Pacific Power Electric Service Requirements.
- Coordinate with Pacific Power for conduit, trenching and backfill requirements from new pole at location shown. Provide and install two (2) 4" conduits with 500# pull rope.

SERVICE RESPONSIBILITIES

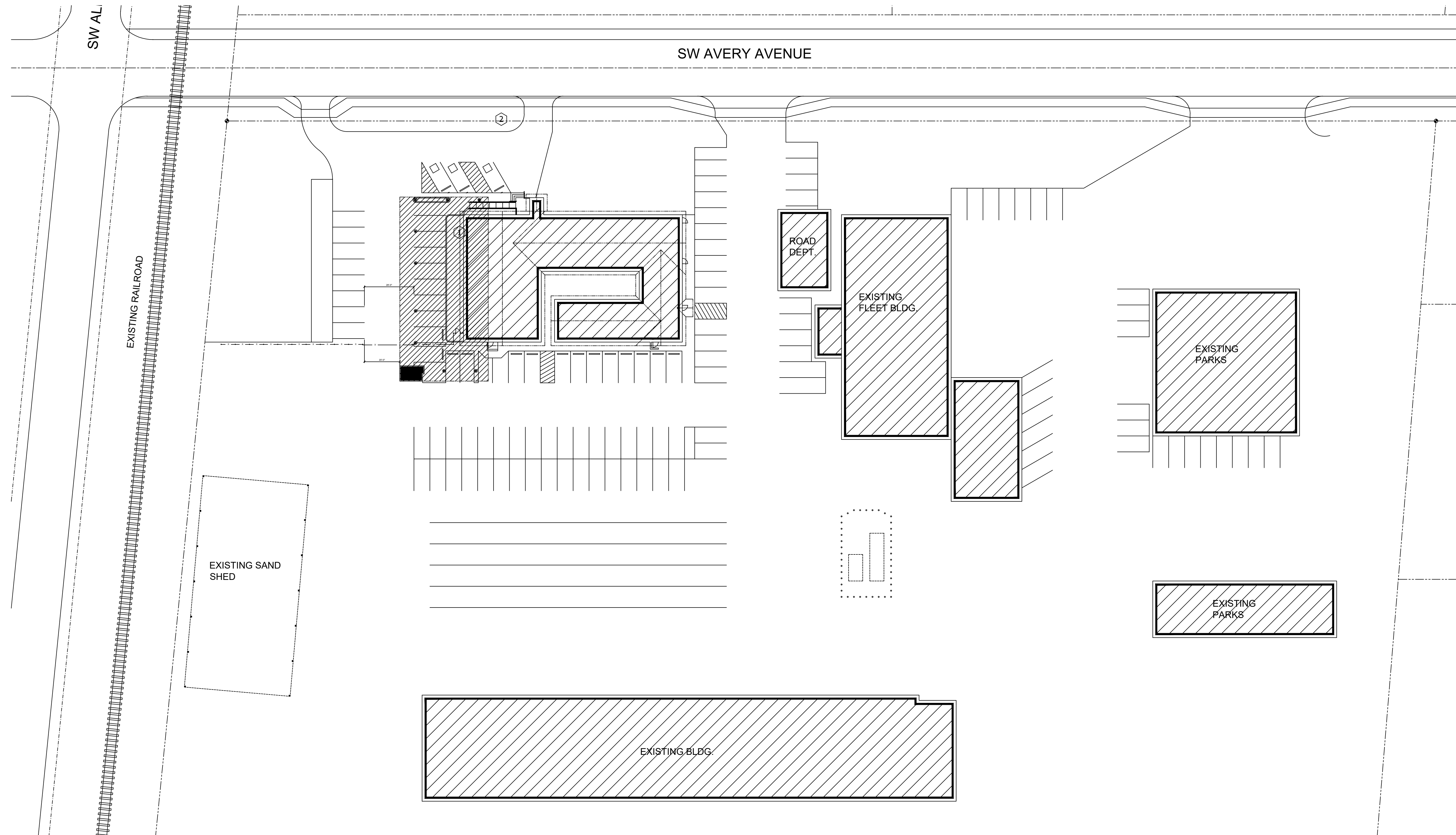
CONTRACTOR TO PROVIDE:
All trenching and backfill, secondary conduit from transformer to metering equipment. utility pull section, service disconnect, meter center.

UTILITY WILL PROVIDE:
Pole mounted transformer. Secondary conductors between transformer and meter equipment with terminations. Meters with terminations.

Verify all requirements with utility during bidding phase of project and provide as required.

LOAD SUMMARY

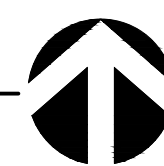
LIGHTING	4.7 KW
RECEPTACLES	35.1 KW
HVAC	24.3 KW
ELEVATOR	27.0 KW
TOTAL	92 KW
AVERAGE AMPS / PHASE	255 A
ELECTRICAL SERVICE	400 AMPS 120/208V 3 PHASE 4 WIRE



1

ELECTRICAL SITE PLAN

SCALE: 1" = 30'



CARLSON VEIT ARCHITECTS P.C.
ARCHITECTURE • INTERIOR DESIGN
503-390-0281 • FAX 503-390-2459 • WWW.CARLSONVEIT.COM
3095 RIVER ROAD NORTH, SALEM, OREGON 97303
MEMBER AMERICAN INSTITUTE OF ARCHITECTS

REGISTERED PROFESSIONAL ENGINEER
45923PE
DIGITAL SIGNATURE
OREGON
JANUARY 11, 2005
LAUREL M. WONG
RENEWAL DATE JUNE-30-2018

project: **AVERY COMPLEX ADDITION**
360 AVERY AVENUE
LIGHTING PLAN

Environmental & Engineering Services Inc.
817 NW Grant Avenue
Corvallis Oregon 97330
Telephone (541) 754-1062
Fax (541) 754-8448
www.eesinet.com

- revisions:
- ▲
 - ▲
 - ▲
 - ▲

date: 06/26/2017
project: 11916
dwg file: 10CVA
drawn by: CJK
checked by: LMW
copyright © 2017
Carlson Veit Architects P.C.

ELECTRICAL SITE PLAN

sheet: **E1.0**
of: