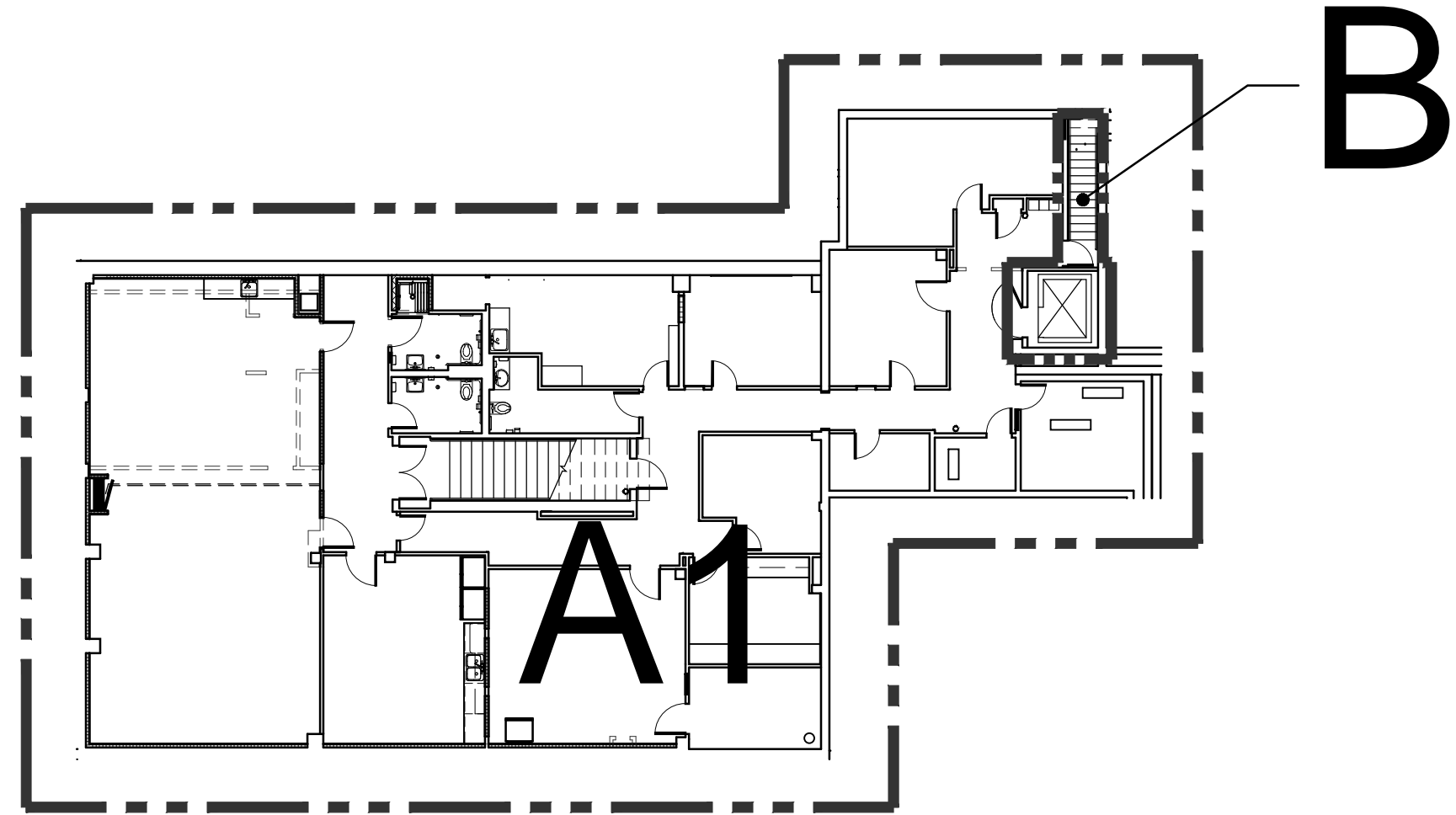


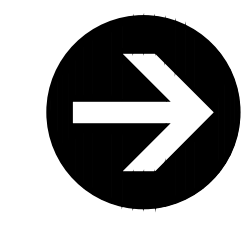
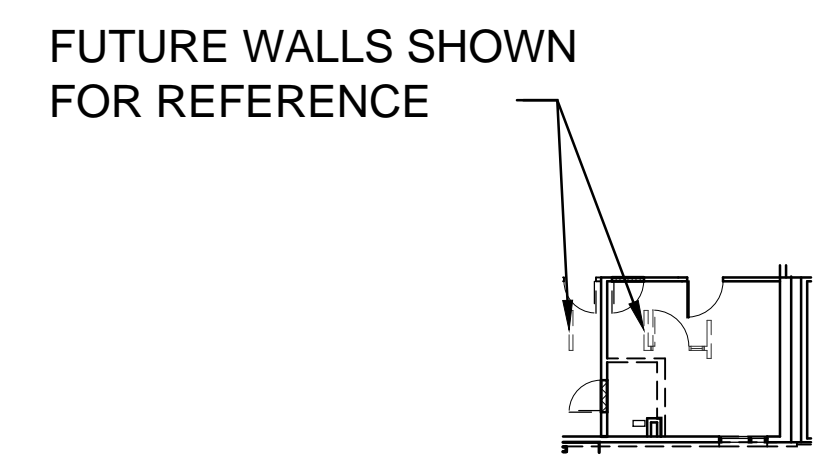
# PHASING PLAN

NOTE:  
1. RELOCATE PHARMACY TO AREA NOTED IN HATCH. REFER TO 5/A0.3 FOR LAYOUT. CONTRACTOR TO PROVIDE DOOR WITH SECURITY ALARM TO MATCH EXISTING. ALL FURNISHINGS ARE OFCI.

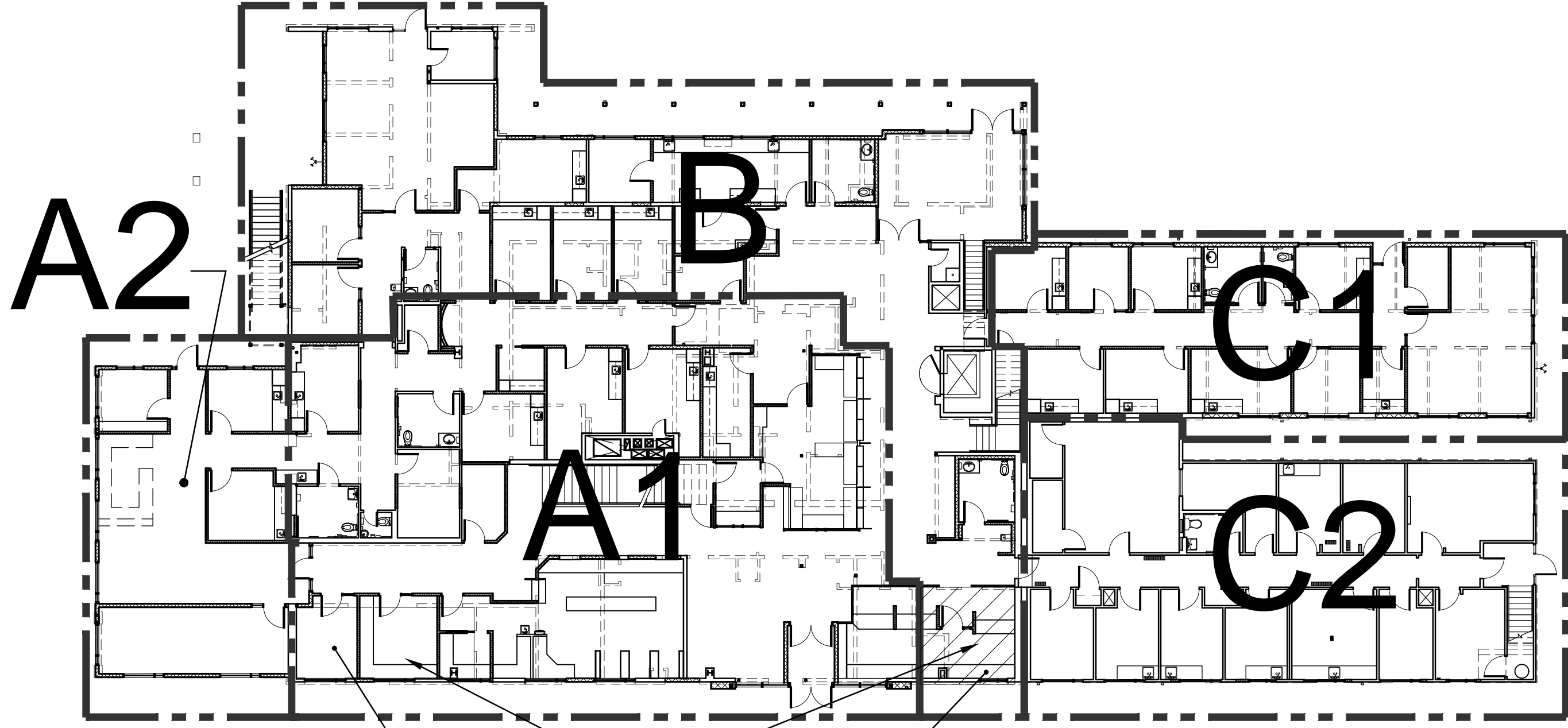
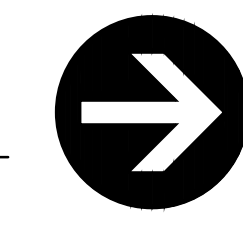
LEGEND:  
 - - - - - EXISTING WALL TO BE REMOVED, FOR REFERENCE  
 - - - - - PHASE BOUNDARY



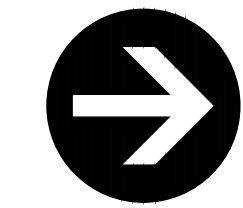
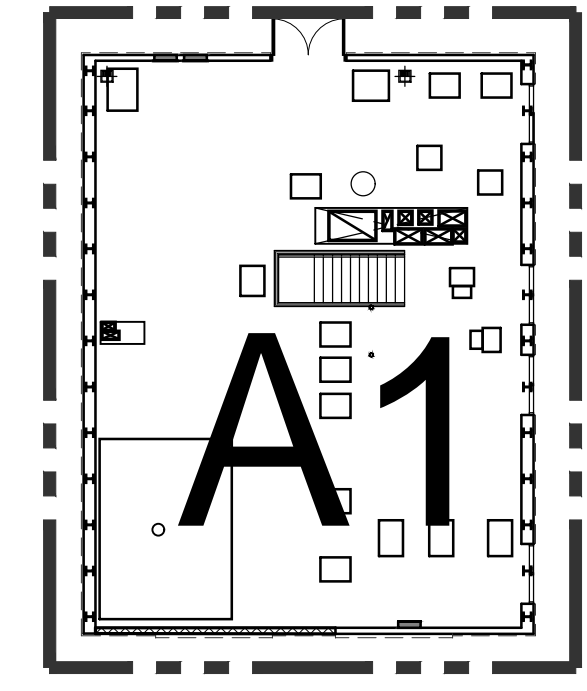
0 BASEMENT PLAN  
SCALE: 1/32"=1'-0"



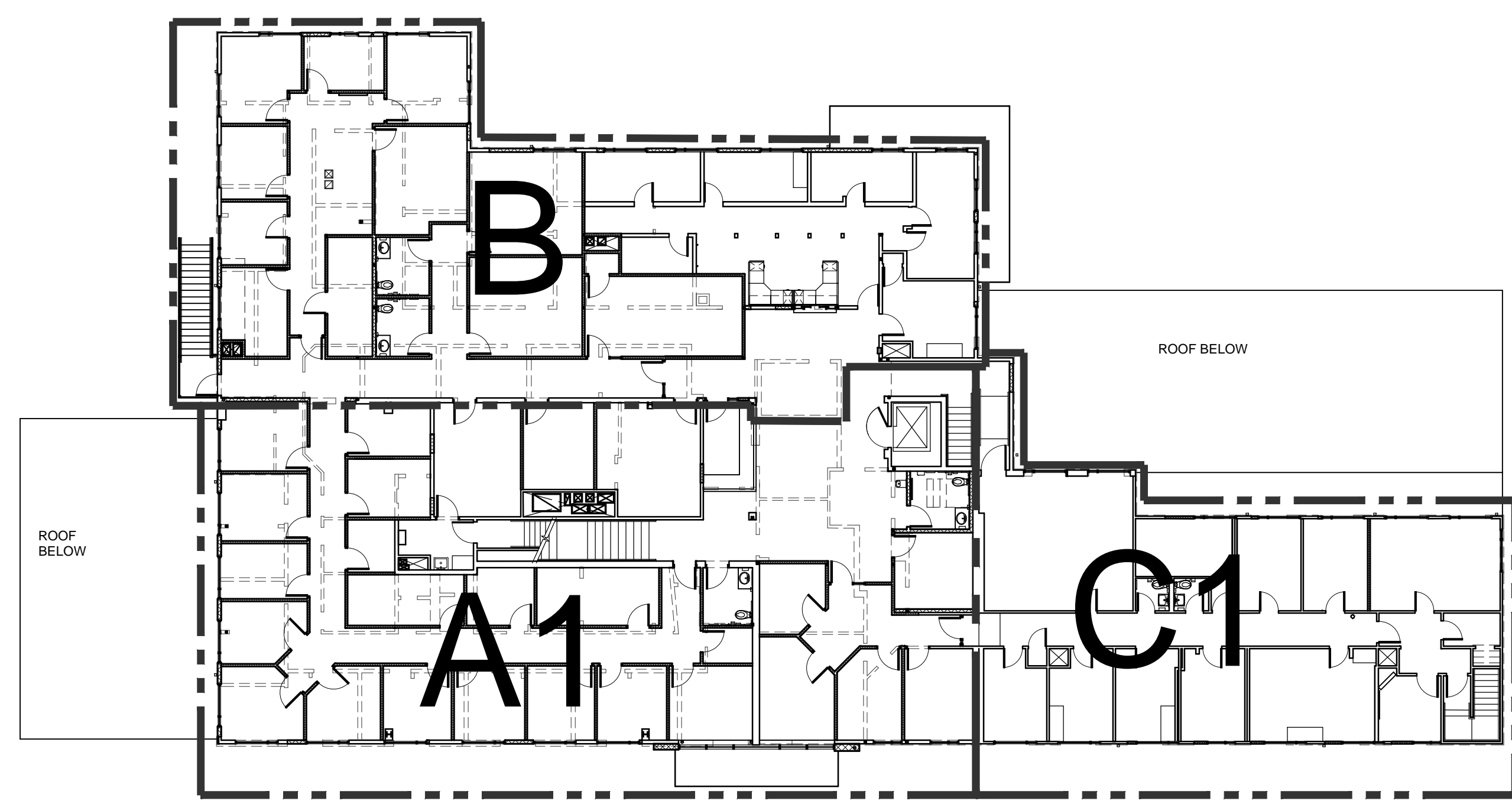
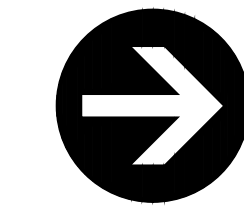
5 TEMPORARY PHARMACY  
SCALE: 1/32"=1'-0"



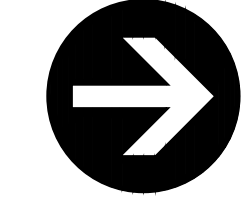
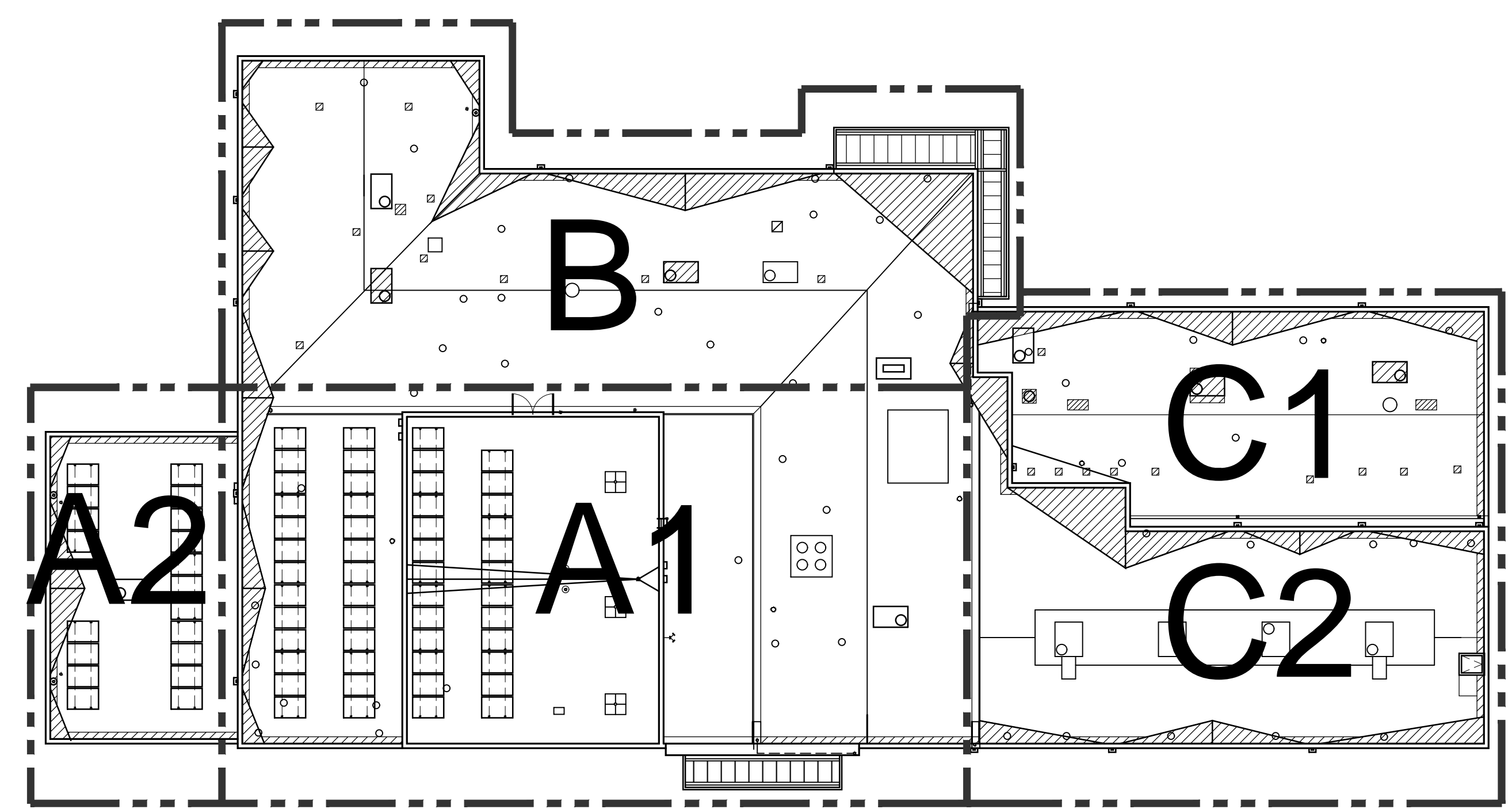
1 FIRST FLOOR PLAN  
SCALE: 1/32"=1'-0"



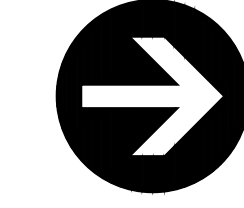
3 MECHANICAL FLOOR PLAN  
SCALE: 1/32"=1'-0"



2 SECOND FLOOR PLAN  
SCALE: 1/32"=1'-0"



4 ROOF PLAN  
SCALE: 1/32"=1'-0"



CONSTRUCTION DOCUMENTS  
NOT FOR CONSTRUCTION

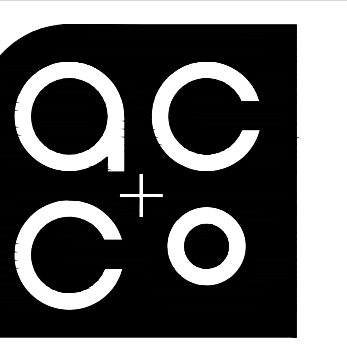
In the event conflicts are discovered between the original signed and sealed documents prepared by the Architect and/or their Consultants, and any copy of the documents transmitted by mail, fax, electronically or otherwise, the original signed and sealed documents shall govern.

JOB NO. 2016.0030

DATE DEC. 18, 2017

DRAWN MLH

REVISIONS



ARCHITECTURE  
COMMUNITY  
363 State Street  
Salem, OR  
97301-3533  
P: 503.581.4114  
www.accoac.com

BENTON COUNTY  
HEALTH CLINIC

530 NW 27TH STREET  
CORVALLIS, OREGON 97330

SHEET

A0.3