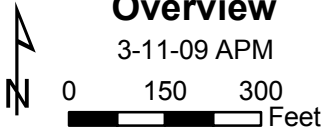


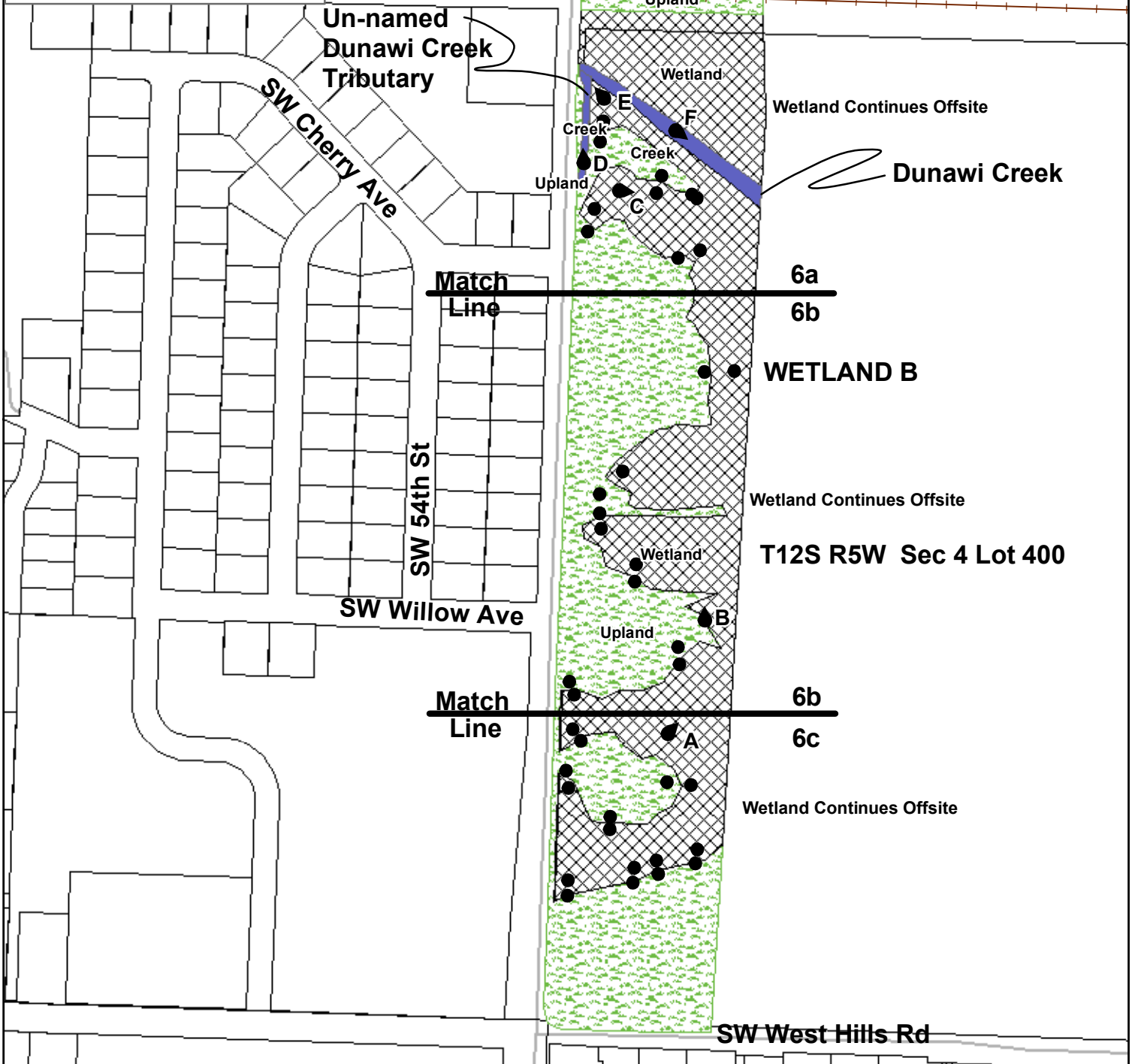
**Figure 6
53rd Street Overpass
Wetland Boundary
Overview**

3-11-09 APM



T11S R5W Sec 33 Lot 300

Wetland Continues Offsite
(Wetland
Delineation
Corps File#: NWP-1992-872/1
DSL File #: WD06-257)



KEY	Study Area 19.75 Acres	Dunawi Creek 0.30 Acres
● Data Point	Wetland A 1.07 Acres	Un-Named Dunawi
⦿ Photo Point	Wetland B 9.02 Acres	Creek Tributary 0.08 Acres
█ Creek	█ Upland	▨ Potential Wetland

Survey completed by Benton County Public Works Survey Division using Leica total stations with Trimble Onboard Software. Data points and wetlands boundaries are sub-centimeter accuracy. Maps are compiled in Oregon State Plain North 83 Harn Projection.